

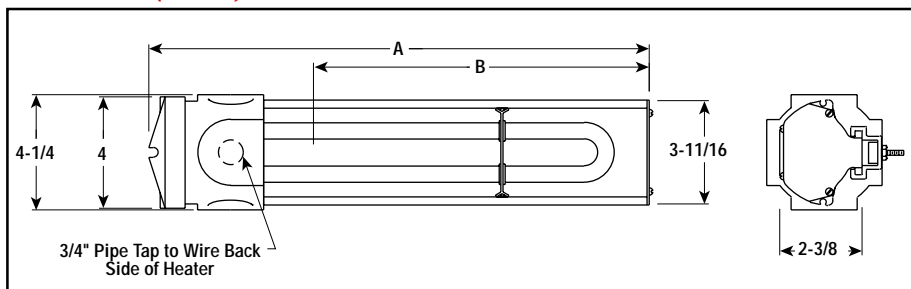
U-RAD-LT

Liquid-Tight, Single-Hairpin Element Radiant Heater



- 3.66 kW/Ft²
- 0.8 - 3.6 kW
- 120, 208, 240, 275 and 480 Volt
- 3/8" Dia. INCOLOY® Sheath Elements (type UTU-LT)
- 1500°F Max. Sheath Temp.

Dimensions (Inches)



Applications

- Food Processing
- Water Intake Screens
- Conveyor Belt Heating
- Outdoor Comfort Heating
- Facilities Washdown Operations
- Winter Applications where element needs to be shielded from strong drafts and wind

Features

Complete, Ready-to-Connect Assembly available in various lengths to accommodate work of varying dimensions.

Movable Mounting Clamps and Bolts are supplied to accommodate many mounting configurations such as banks, tunnels and oven sections.

Special Protective Terminal Cover provides liquid-tight protection to terminals.

Power Connections are made at one end, using high-temperature wire.

Construction

Liquid-Tight Terminal Enclosure for outdoor or hose-down locations.

Enclosed Chromalox Alloy-Sheath Tubular Heating Element is completely isolated and supported on secondary insulation for improved electrical safety. Designed for long life, the element is more resistant to hard blows than quartz lamp or tube and open coil types. Element includes bulkhead threaded fittings to ensure a water-tight seal.

Rigid Extruded Aluminum Housing protects heating element from harsh industrial environments.

Highly Polished Aluminum Reflectors give good reflectivity and heat transfer, and are easily cleaned to maintain energy efficiency.

Accessories

Protective Grille — Optional snap-in sections help protect personnel and work from contact with hot elements.

Companion Reflector — Optional radiant companion reflectors improve oven efficiency. See Radiant Accessories in this section.

Metal Sheath Radiant

Specifications and Ordering Information

kW	Volts	Length (In.)		Model	Stock	PCN	Optional Grille ²	Replacement Elements ¹	Wt. (Lbs.)
		Overall A	Heated B						
0.8	120	13-5/16	8-5/16	U-RAD-2LT	S	106833	(1) GR-800	UTU-2LT	7
0.8	208	13-5/16	8-5/16	U-RAD-2VLT	NS	119140	(1) GR-800	UTU-2VLT	7
0.8	240	13-5/16	8-5/16	U-RAD-2LT	S	106841	(1) GR-800	UTU-2LT	7
0.8	275	13-5/16	8-5/16	U-RAD-2VLT	NS	119159	(1) GR-800	UTU-2VLT	7
1.1	120	16-7/16	11-7/16	U-RAD-3LT	S	106930	(1) GR-800	UTU-3LT	8
1.1	208	16-7/16	11-7/16	U-RAD-3VLT	NS	119167	(1) GR-800	UTU-3VLT	8
1.1	240	16-7/16	11-7/16	U-RAD-3LT	S	106850	(1) GR-800	UTU-3LT	8
1.1	275	16-7/16	11-7/16	U-RAD-3VLT	NS	119175	(1) GR-800	UTU-3VLT	8
1.8	208	24-3/8	19-3/8	U-RAD-4VLT	NS	119183	(1) GR-2	UTU-4VLT	10
1.8	240	24-3/8	19-3/8	U-RAD-4LT	S	106868	(1) GR-2	UTU-4LT	10
1.8	275	24-3/8	19-3/8	U-RAD-4VLT	NS	119191	(1) GR-2	UTU-4VLT	10
1.8	480	24-3/8	19-3/8	U-RAD-4LT	S	106948	(1) GR-2	UTU-4LT	10
2.5	208	31-13/16	26-13/16	U-RAD-5VLT	NS	119204	(1) GR-3	UTU-5VLT	11
2.5	240	31-13/16	26-13/16	U-RAD-5LT	S	106876	(1) GR-3	UTU-5LT	11
2.5	275	31-13/16	26-13/16	U-RAD-5VLT	NS	119212	(1) GR-3	UTU-5VLT	11
2.5	480	31-13/16	26-13/16	U-RAD-5LT	S	106884	(1) GR-3	UTU-5LT	11
3	208	37-13/16	32-13/16	U-RAD-6VLT	NS	119220	(2) GR-2	UTU-6VLT	13
3	240	37-13/16	32-13/16	U-RAD-6LT	S	106892	(2) GR-2	UTU-6LT	13
3	275	37-13/16	32-13/16	U-RAD-6VLT	NS	119239	(2) GR-2	UTU-6VLT	13
3	480	37-13/16	32-13/16	U-RAD-6LT	S	106905	(2) GR-2	UTU-6LT	13
3.6	208	43-15/16	38-15/16	U-RAD-7VLT	NS	119247	(1) GR-4	UTU-7VLT	15
3.6	240	43-15/16	38-15/16	U-RAD-7LT	NS	106913	(1) GR-4	UTU-7LT	15
3.6	275	43-15/16	38-15/16	U-RAD-7VLT	NS	119255	(1) GR-4	UTU-7VLT	15
3.6	480	43-15/16	38-15/16	U-RAD-7LT	S	106921	(1) GR-4	UTU-7LT	15

Stock Status: S = stock AS = assembly stock NS = non-stock
To Order— Specify model, PCN, kW, volts, quantity, optional grille and replacement elements (if needed).

1. Refer to Tubular Heaters section.
2. Refer to Accessories in this section for ordering information.