

Cast-in Heaters

- Extruder Barrel Castings
- Flat Clamp-on Castings, Round or Rectangular
- Extruder Die Heaters
- Multi-plane Castings



Applications

- Extruders
- Injection Molders
- Heat Sealers
- Compression Molders
- Vacuum Forming
- Laminating Equipment
- Hot Plates
- Platens
- Dies
- Rolls
- Pipe Heating
- Soft Metal Melters
- All Heating/Cooling Applications

Features

Custom Design to fit the application

Uniform Heat distribution ensures product reliability

Uniformly Dense casting ensures long life and minimizes downtime

Unlimited size and contour

Precise Temperature control of both heating and cooling cycle.

Specifications

Types

- Water-cooled Heater
- Air-cooled Heater
- Heating Elements Only
- Cooling Tubes Only

Casting Material

- Aluminum Alloys
- Bronze Alloys
- Iron

Sizes and Contour

Generally Unlimited
3 - 40" I.D.
2-1/2 - 30" Lengths
3/4 - 2-1/2" O.D.

Maximum Temperature

- Aluminum - 600°F
- Bronze - 1,200°F
- Iron - 900 °F

Voltages — 120, 240, 480 or 550V
1 or 3 Phase.

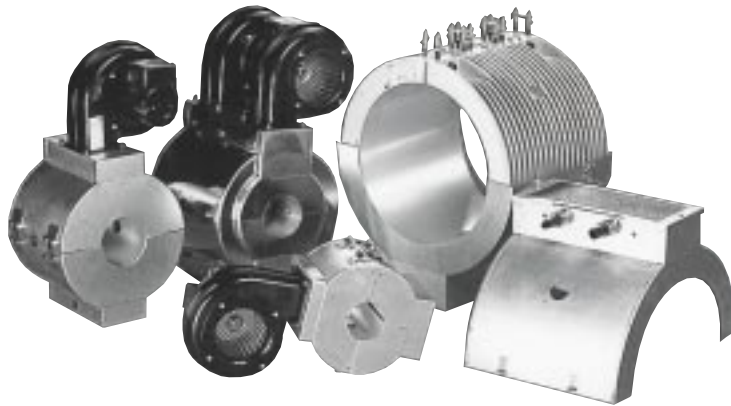
Wattage — Directly related to element and contact surface watt density.

Finishing Operations — Completely machined contact surfaces, mounting holes, thermocouple holes, or as cast.

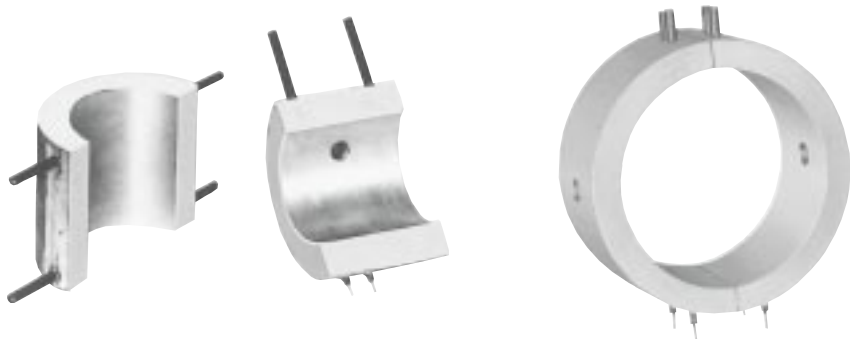
Cast-in Heaters *(cont'd.)*

Termination Options

- Threaded Terminal
- Hermetic Seals
- Flexible Leadwire
- Stainless Steel Braid
- Stainless Steel Conduit Plug
- Explosion Resistant Terminal Box
- Moisture Resistant Terminal Box

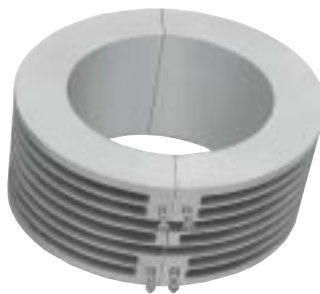


Air Cooled Aluminum cast barrel heaters with shroud and or blower capability



Cooling Tubes — 3/8 or 1/2" O.D. Stainless Steel or INCOLOY®.

Thinwall cast-in band heater with cooling tubes combines durability, compactness and expert construction throughout. End result is a rugged band heater that provides exceptional performance and extra long life.



Air Cooled — Precisely engineered fins to maximize surface area for rapid cooling. Provides maximum efficiency and effectiveness.



Extruder Die heaters of bronze or aluminum provide high wattage and compact size.