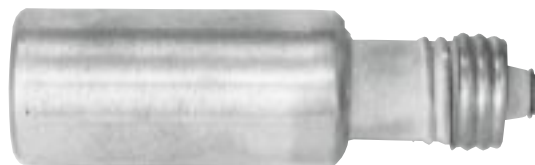


SCB

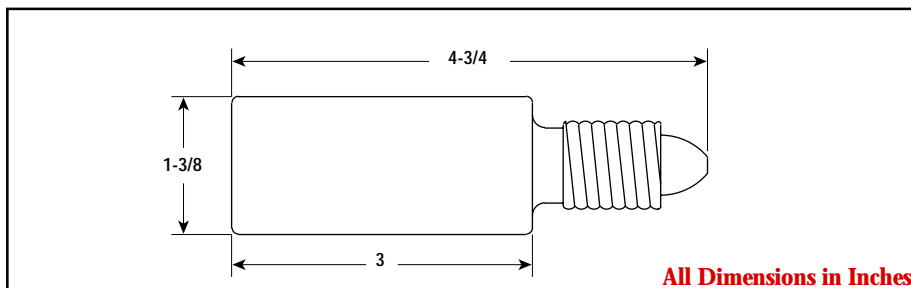
Edison Screw Base Space Heater

- Edison Screw Base
- 50 - 200 Watts
- 120 and 240 Volt
- Brass Sheath



Cartridge

Dimensions



Applications

Edison Screw Base installs in standard porcelain lamp socket for simple installation.

Prevent moisture accumulation, mildew and freezing in clothes lockers, fire extinguisher cabinets and control boxes. Also used in resistor banks.

Specifications and Ordering Information

Watts	Model	120V		240V		Wt. (Lbs.)
		Stock	PCN	Stock	PCN	
50	SCB-50	S	253809	—	—	0.6
75	SCB-75	S	253817	S	253825	0.6
100	SCB-100	S	253833	S	253841	0.6
150	SCB-150	S	253850	S	253868	0.6
200	SCB-200	S	256410	S	273560	0.6

Stock Status: S = stock AS = assembly stock NS = non-stock
To Order—Specify model, PCN, watts, volts and quantity.

Cartridge Accessory Sleeve Adapter

3/8" Dia. Cartridge heaters can be sleeved to fit 1/2 and 5/8" diameter holes, allowing one diameter to fit most applications.

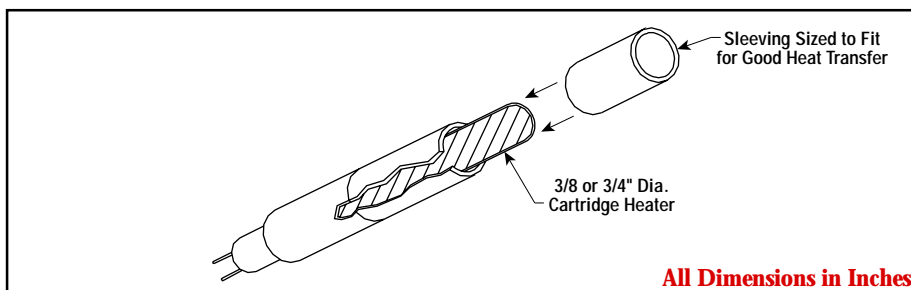
3/4" I.D. Sleeves permit installation of type CIR high watt density heaters in 1-1/4" diameter holes to replace old style large diameter heaters.

Makes Removal of heaters easier. No more drilling, hammering, etc.

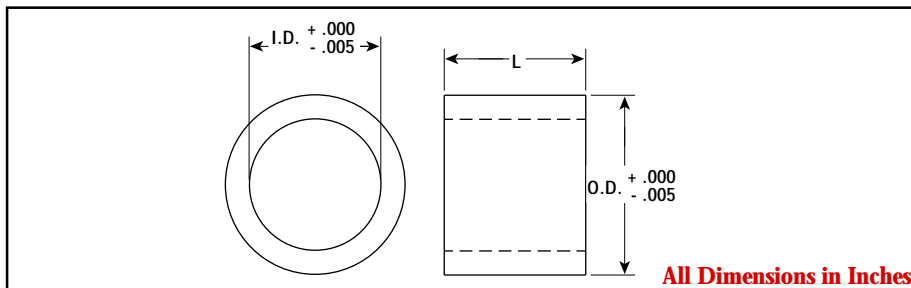
Made of Steel, these pressed powder metal sleeves have been designed and fully tested to assure proper transfer of heat from the cartridge heater to the work.

800°F Maximum Work Temperature. For higher work temperatures, contact your Local Chromalox Sales office.

Dimensions



Dimensions



Specifications and Ordering Information

Dimensions (In.)			Model	Stock	PCN
I.D.	O.D.	Length			
3/8	0.498	1	264-055320-001	S	289756
3/8	0.622	1	264-055320-003	S	289764
3/4	1.25	1	264-055320-011	S	289801

Stock Status: S = stock AS = assembly stock NS = non-stock
To Order—Specify model, PCN, watts, volts and quantity.