



## FPEP & CEP-15

### Explosion Proof Convection Heaters

- 200 to 1,500 Watts
- 682 - 5,118 Btuh
- 120, 208, 240, 277, 480 and 600 Volt
- Single Phase

#### Description

The FPEP and CEP heaters have been especially engineered and constructed for supplying heat in areas containing hazardous vapors, gases and dusts.

#### Applications

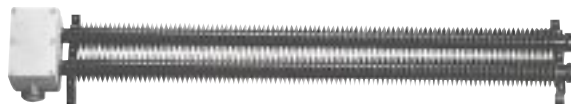
- Refineries
- Gas Generator Rooms
- Grain Handling Areas
- Mines
- Sewage Pumping Stations

#### Construction

- Heating Surface Constructed of Schedule 40 Finned Pipe
- Cast Alloy® Explosion Proof Terminal Enclosure
- Elements Consist of 4 INCOLOY® Sheath Tubular Heaters

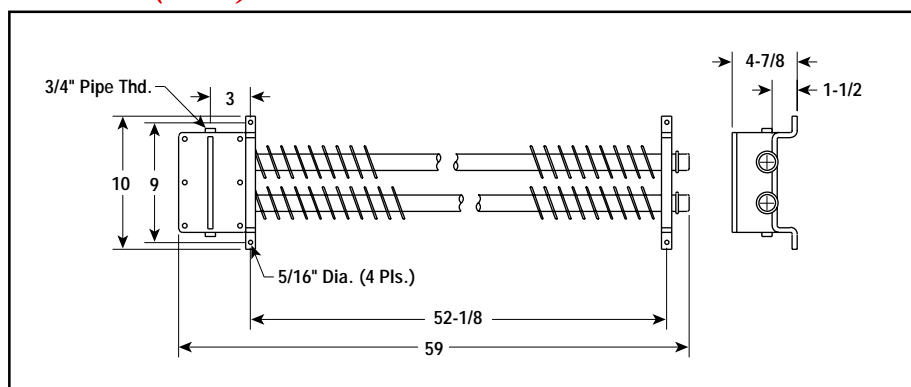


**FPEP**



**CEP-15**

#### Dimensions (Inches)



#### Designed for Areas Classified

- Class I, Groups C, D  
Temperature Code T3C 160°C (320°F)
- Class II, Groups E, F, G  
Temperature Code T3B 165°C (329°F)
- Class III

#### Advantages

- Long Life
- Safe for Dusty Environments
- Easy Installation
- Corrosion Resistant

#### Specifications and Ordering Information

Electrical					Dimensions (In.)			Ordering			Wt. (Lbs.)
Watts	Volts	No. Elem.	Amps	Btuh	Height	Width	Depth	Model	Stock	PCN	
<b>FPEP — One Finned Element</b>											
200	120	1	1.7	682	5	21-5/8	5-3/4	FPEP-200211	NS	350000	14
400	120	1	3.3	1,365	5	34-1/2	5-3/4	FPEP-400211	NS	350019	19
400	208	1	1.9	1,365	5	34-1/2	5-3/4	FPEP-400221	NS	350027	19
400	240	1	1.7	1,365	5	34-1/2	5-3/4	FPEP-400231	NS	350035	19
500	120	1	4.2	1,706	5	40-1/8	5-3/4	FPEP-500211	NS	350043	24
500	208	1	2.4	1,706	5	40-1/8	5-3/4	FPEP-500221	NS	350051	24
500	240	1	2.1	1,706	5	40-1/8	5-3/4	FPEP-500231	NS	350060	24
750	120	1	6.3	2,559	5	57-7/8	5-3/4	FPEP-750211	NS	350078	34
750	208	1	3.6	2,559	5	57-7/8	5-3/4	FPEP-750221	NS	350086	34
750	240	1	3.1	2,559	5	57-7/8	5-3/4	FPEP-750231	NS	350094	34
1,000	120	1	8.3	3,412	5	78-7/8	5-3/4	FPEP-1000211	NS	350107	41
1,000	208	1	4.8	3,412	5	78-7/8	5-3/4	FPEP-1000221	NS	350115	41
1,000	240	1	4.2	3,412	5	78-7/8	5-3/4	FPEP-1000231	NS	350123	41
<b>CEP-15 — Two Finned Elements</b>											
1,500	120	1	12.5	5,118	10	59	4-7/8	<b>CEP-15C11</b>	<b>S</b>	<b>350131</b>	66
1,500	208	1	7.2	5,118	10	59	4-7/8	<b>CEP-15C21</b>	<b>S</b>	<b>350140</b>	66
1,500	240	1	6.3	5,118	10	59	4-7/8	<b>CEP-15C31</b>	<b>S</b>	<b>350158</b>	66
1,500	277	1	5.4	5,118	10	59	4-7/8	CEP-15C41	NS	350166	66
1,500	480	1	3.1	5,118	10	59	4-7/8	<b>CEP-15C71</b>	<b>S</b>	<b>350174</b>	66
1,500	600	1	2.5	5,118	10	59	4-7/8	<b>CEP-15C81</b>	<b>S</b>	<b>350182</b>	66

**Stock Status:** S = stock AS = assembly stock NS = non-stock  
**To Order**—Specify model, PCN, watts, volts, phase and quantity.

Refer to  
WR-80EP  
in the Controls section.