

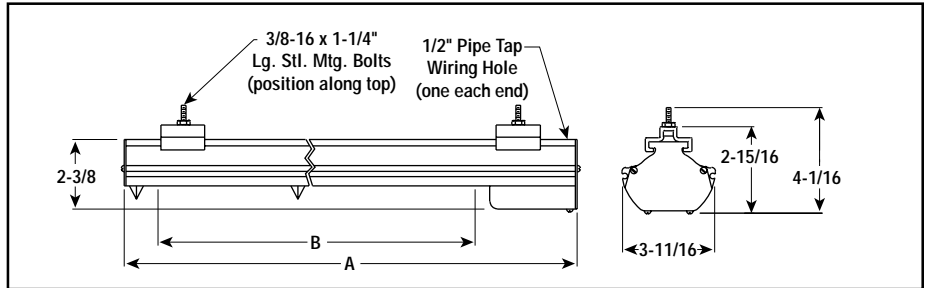
S-RAD

Single Element Radiant Heater



- 2.1 kW/Ft²
- 0.95 - 4.4 kW
- 120, 208, 240 and 275 Volt
- 3/8" Dia. INCOLOY® Sheath Elements (type SRTU)
- 1500°F Max. Sheath Temp.
- Single End Termination

Dimensions (Inches)



Applications

- Resin Curing
- Thermoforming
- Equipment Packaging
- Mirror Manufacturing
- Rubber Curing

Features

Complete, Ready-to-Connect Assembly available in various lengths to accommodate work of varying dimensions.

Movable Mounting Clamps and Bolts are supplied to accommodate many mounting configurations such as banks, tunnels and oven sections.

Process Temperature Control — Radiant heater output may be controlled with Chromalox SCR Power Controllers, Percentage Timing Input Controls and Non-Contact Temperature Sensors. See the Controls section of this catalog.

Additional Sizes and Ratings — Contact your Local Chromalox Sales office for price and availability.

Construction

Enclosed Chromalox Alloy-Sheath Tubular Heating Element is completely isolated and supported on secondary insulation for improved electrical safety. Designed for long life, the element is more resistant to hard blows than quartz lamp or tube and open coil types.

Rigid Extruded Aluminum Housing protects heating element from harsh industrial environments.

Highly Polished Aluminum Reflectors give good reflectivity and heat transfer, and are easily cleaned to maintain energy efficiency.

Accessories

Protective Grille — Optional snap-in sections help protect personnel and work from contact with hot elements.

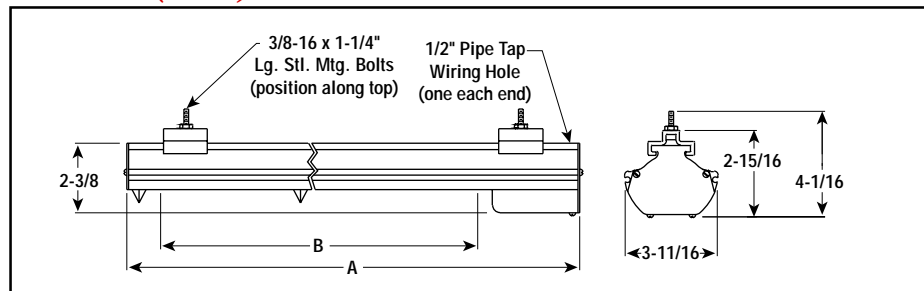
Companion Reflector — Optional radiant companion reflectors improve oven efficiency. See Radiant Accessories in this section.

S-RAD

Single Element Radiant Heater (cont'd.)



Dimensions (Inches)



Specifications and Ordering Information

| kW | Volts | Length (In.) | | Model | Stock | PCN | Optional Grille ¹ | Replacement Elements | Wt. (Lbs.) |
|------|-------|--------------|----------|----------|-------|--------|------------------------------|----------------------|------------|
| | | Overall A | Heated B | | | | | | |
| 0.95 | 120 | 24-3/8 | 16-1/2 | S-RAD-2 | NS | 115334 | (1) GR-2 | SRTU-209 | 5 |
| 0.95 | 208 | 24-3/8 | 16-1/2 | S-RAD-2V | NS | 115342 | (1) GR-2 | SRTU-209V | 5 |
| 0.95 | 240 | 24-3/8 | 16-1/2 | S-RAD-2 | AS | 115350 | (1) GR-2 | SRTU-209 | 5 |
| 0.95 | 275 | 24-3/8 | 16-1/2 | S-RAD-2V | NS | 115369 | (1) GR-2 | SRTU-209V | 5 |
| 1.3 | 120 | 30-5/8 | 22-3/4 | S-RAD-3 | AS | 115377 | (1) GR-3 | SRTU-313 | 6 |
| 1.3 | 208 | 30-5/8 | 22-3/4 | S-RAD-3V | NS | 115385 | (1) GR-3 | SRTU-313V | 6 |
| 1.3 | 240 | 30-5/8 | 22-3/4 | S-RAD-3 | AS | 115393 | (1) GR-3 | SRTU-313 | 6 |
| 1.3 | 275 | 30-5/8 | 22-3/4 | S-RAD-3V | NS | 115406 | (1) GR-3 | SRTU-313V | 6 |
| 2.2 | 208 | 46-5/8 | 38-5/8 | S-RAD-4V | NS | 115414 | (1) GR-4 | SRTU-422V | 9 |
| 2.2 | 240 | 46-5/8 | 38-5/8 | S-RAD-4 | NS | 115422 | (1) GR-4 | SRTU-422 | 9 |
| 2.2 | 275 | 46-5/8 | 38-5/8 | S-RAD-4V | NS | 115430 | (1) GR-4 | SRTU-422V | 9 |
| 3 | 208 | 61-3/8 | 53-1/4 | S-RAD-5V | NS | 115457 | (1) GR-5 | SRTU-530V | 11 |
| 3 | 240 | 61-3/8 | 53-1/4 | S-RAD-5 | AS | 115465 | (1) GR-5 | SRTU-530 | 11 |
| 3 | 275 | 61-3/8 | 53-1/4 | S-RAD-5V | NS | 115473 | (1) GR-5 | SRTU-530V | 11 |
| 3.75 | 208 | 73-3/4 | 65-1/2 | S-RAD-6V | NS | 115490 | (1) GR-2, (1) GR-5 | SRTU-638V | 13 |
| 3.75 | 240 | 73-3/4 | 65-1/2 | S-RAD-6 | AS | 115502 | (1) GR-2, (1) GR-5 | SRTU-638 | 13 |
| 3.75 | 275 | 73-3/4 | 65-1/2 | S-RAD-6V | NS | 115510 | (1) GR-2, (1) GR-5 | SRTU-638V | 13 |
| 4.4 | 208 | 85-3/4 | 77-1/2 | S-RAD-7V | NS | 115537 | (1) GR-2, (1) GR-6 | SRTU-744V | 15 |
| 4.4 | 240 | 85-3/4 | 77-1/2 | S-RAD-7 | AS | 115545 | (1) GR-2, (1) GR-6 | SRTU-744 | 15 |
| 4.4 | 275 | 85-3/4 | 77-1/2 | S-RAD-7V | NS | 115553 | (1) GR-2, (1) GR-6 | SRTU-744V | 15 |

Stock Status: S = stock AS = assembly stock NS = non-stock

To Order—Specify model, PCN, kW, volts, quantity, optional grille and replacement elements (if needed).

Notes —

- See Accessories in this section for ordering information.
- 480V ratings are available on some models. Contact your Local Chromalox Sales office for price and availability.