

Components



Strip and Ring

SN & WS

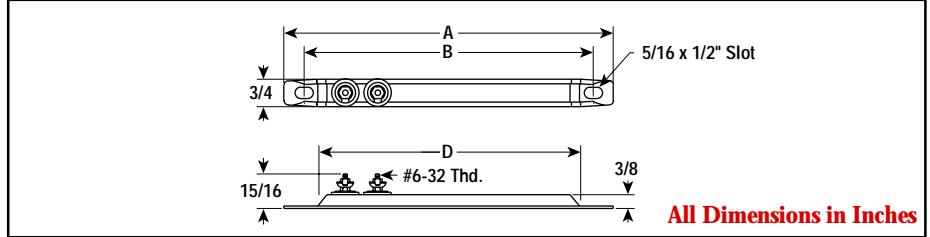
3/4" Wide (SN)
2-1/2" Wide (WS)



Type SN

- 9-1/2 - 35-3/4" Lengths
- 100 - 600 Watts
- 120 and 240 Volt
- 7 - 11 W/In²

Dimensions (type SN)



Type WS

- 6-1/2 - 25-1/2" Lengths
- 400 - 1,500 Watts
- 120 and 240 Volt
- 8 - 25 W/In²

Specifications and Ordering Information

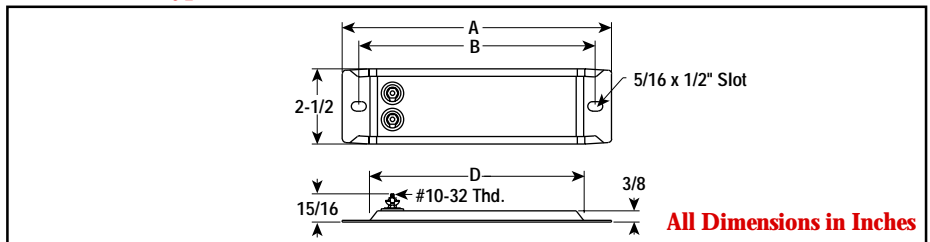
Dimensions (In.)			Watts	W/In ²	Model	Rust-Resisting Iron Sheath				Wt. (Lbs.)	
A	B	D				120V		240V			
						Stock	PCN	Stock	PCN		
9-1/2	8-1/2	8	100	8	SN-910	S	132919	—	—	0.4	
10-1/2	9-1/2	9	150	11	SN-1015	S	132927	—	—	0.5	
12	11	10-1/2	150	9	SN-1215	S	132935	—	—	0.6	
15-1/4	14-1/4	13-3/4	200	8	SN-1520	S	132943	S	132951	0.8	
17-7/8	16-7/8	16-3/8	250	8	SN-1825	S	132960	S	132978	0.9	
23-3/4	22-3/4	22-1/4	300	7	SN-2430	S	132986	S	132994	1	
30-3/8	29-3/8	28-7/8	450	8	SN-3045	S	133006	S	133014	1.3	
35-3/4	34-3/4	34-1/4	600	9	SN-3660	NS	133022	S	133030	1.5	

Stock Status: S = stock AS = assembly stock NS = non-stock
To Order—Specify model, PCN, watts, volts and quantity.

Applications

Strip heaters are used for heat transfer by conduction or convection to heat liquids, air, gases and surfaces. See guidelines in the Strip Heater Overview section.

Dimensions (type WS)



Specifications and Ordering Information

Dimensions (In.)			Watts	W/In ²	Model	120V		240V		Wt. (Lbs.)
A	B	D				Stock	PCN	Stock	PCN	
WS — Rust-Resisting Iron Sheath										
6-1/2	5-1/2	5	400	14	WS-640	S	132716	S	132724	0.8
8-1/2	7-1/2	7	500	16	WS-850	S	132732	S	132740	1
12	11	10-1/2	600	12	WS-1260	NS	144880	NS	144899	1.4
15-1/4	14-1/4	13-3/4	750	11	WS-1575	S	132759	S	132767	1.9
21	20	19-1/2	850	8	WS-2185	NS	132775	NS	132783	2.3
25-1/2	24-1/2	24	1,000	8	WS-2510	S	132791	S	132804	2.6
WS — Chrome Steel Sheath										
6-1/2	5-1/2	5	500	25	WS-605	S	132812	S	132820	0.8
8-1/2	7-1/2	7	600	19	WS-806	S	132839	S	132847	1
12	11	10-1/2	800	16	WS-1208	NS	144872	NS	144864	1.4
15-1/4	14-1/4	13-3/4	1,000	14	WS-1501	S	132855	S	132863	1.9
21	20	19-1/2	1,250	12	WS-2101	NS	132871	S	132880	2.3
25-1/2	24-1/2	24	1,500	12	WS-2515	NS	132898	S	132900	2.6

Stock Status: S = stock AS = assembly stock NS = non-stock
To Order—Specify model, PCN, watts, volts and quantity.

Note — If terminal housing is required with a type WS strip heater, use a type SE-AC-1 mounted sideways. Ceramic post terminal insulators can also be used. (See Strip Heater Overview Section.)