

## NSA & SSNHM

1/2" Wide (NSA)  
1-1/8" Wide (SSNHM)



### Type NSA

- 7-1/16 - 16-1/4" Lengths
- 125 - 400 Watts
- 120 and 240 Volt
- Seamless INCOLOY® Sheath
- 7 - 32 W/In<sup>2</sup>
- 1500°F Max. Sheath Temp.

### Type SSNHM

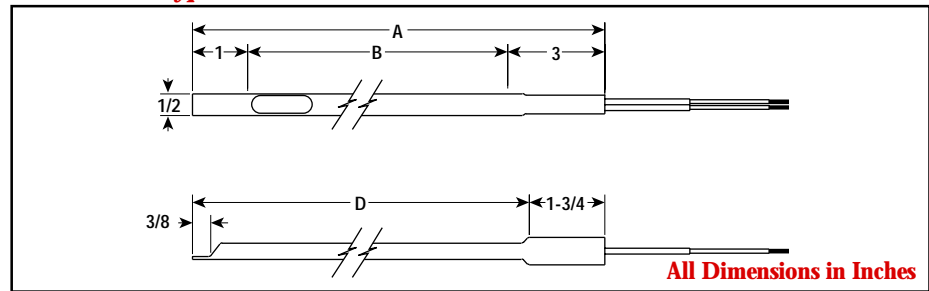
- 8-1/8 - 27-5/8" Lengths  
(with Optional Mounting Tabs)
- 200 - 800 Watts
- 120 and 240 Volt
- Seamless Sheath
- 13 - 19 W/In<sup>2</sup>

### Applications

Strip heaters are used for heat transfer by conduction or convection to heat liquids, air, gases and surfaces. See guidelines in the Strip Heater Overview section.

Seamless strip heaters are supplied without mounting tabs as standard.

### Dimensions (type NSA)



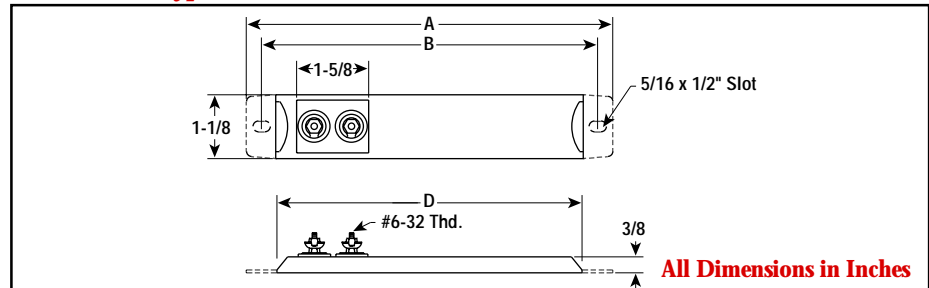
### Specifications and Ordering Information — NSA

Dimensions (In.)					INCOLOY® Sheath				Wt. (Lbs.)	
A	B	D	Watts	W/In <sup>2</sup>	Model	120V		240V		
						Stock	PCN	Stock		PCN
7-1/16	3-1/16	5-5/16	125	32	NSA-711	NS	328292	—	—	0.2
10-11/16	6-11/16	8-15/16	300	20	NSA-1013	NS	328305	—	—	0.3
11-1/8	7-1/8	9-3/8	350	22	NSA-1123	—	—	NS	328348	0.4
13-3/4	9-3/4	12	200	11	NSA-1422	—	—	NS	328321	0.5
14-3/16	10-3/16	12-7/16	200	7	NSA-1412	NS	328313	—	—	0.5
16-1/4	12-1/4	14-1/2	400	19	<b>NSA-1624</b>	—	—	<b>S</b>	<b>328330</b>	0.6

**Stock Status:** S = stock AS = assembly stock NS = non-stock  
**To Order**—Specify model, PCN, watts, volts and quantity.



### Dimensions (type SSNHM)



### Specifications and Ordering Information — SSNHM

Dimensions (In.)					MONEL® Sheath				Wt. (Lbs.)	
A	B	D	Watts	W/In <sup>2</sup>	Model	120V		240V		
						Stock	PCN	Stock		PCN
8-1/8	7-3/8	6-5/8	200	19	SSNHM-08	NS	142842	NS	—	0.4
9-5/8	8-7/8	8-1/8	275	19	SSNHM-09	NS	142850	NS	—	0.4
11-1/8	10-3/8	9-5/8	300	16	SSNHM-11	NS	142869	NS	—	0.5
12-1/8	11-3/8	10-5/8	320	16	SSNHM-12	NS	142877	NS	142885	0.6
14-1/8	13-3/8	12-5/8	375	14	SSNHM-14	NS	142893	NS	142906	0.7
15-3/8	14-5/8	13-7/8	415	14	SSNHM-15	NS	142914	NS	142922	0.8
18	17-1/8	16-1/2	495	13	SSNHM-18	NS	142930	NS	142949	1.4
19-5/8	18-7/8	18-1/8	550	13	SSNHM-19	NS	142957	NS	142965	1.4
21-1/8	20-3/8	19-5/8	600	13	SSNHM-21	NS	142973	NS	142981	1.6
22-5/8	21-7/8	22-1/8	625	13	SSNHM-22	NS	142990	NS	143001	1.8
23-7/8	23-1/8	22-3/8	675	13	SSNHM-24	NS	143010	NS	143028	1.8
25-5/8	24-7/8	24-1/8	725	13	SSNHM-25	NS	143036	NS	143044	2.1
27-5/8	26-7/8	26-1/8	800	13	SSNHM-27	NS	143052	NS	143060	2.3

**Stock Status:** S = stock AS = assembly stock NS = non-stock  
**To Order**—Specify model, PCN, watts, volts and quantity.