

## HSP

### Half & Full Sheath Disc Heater

- Solid Disc Design
- 150 - 600 Watts
- 120 and 240 Volt
- Full and Half Sheath Available
- Use Ring Clamp 6018 to Mount Element to Heated Surface



Half & Full Sheath

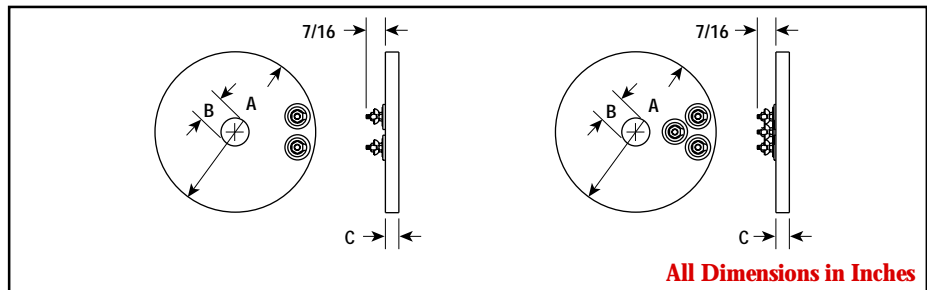


Full Sheath Only



Full Sheath Only

#### Dimensions



#### Features

**Single-Heat Discs** — Have two terminals for single wattage on-off switch or thermostat.

**Three-Heat Discs** — Have three terminals that split the heater into 2 equal circuits. Center terminal is common.

**Easy Installation** — Circular shape and use of Mounts with Bolt or Studs simplifies use of disc heaters.

**Half Sheath Units Have Reduced Thermal Gradient to Heated Surface** — Provides faster heat up.

Nest Disc in Ring heaters to pack heat in small area.

#### Specifications and Ordering Information

Dimensions (In.)			Rust-Resisting Iron Sheath						Chrome Steel Sheath						Wt. (Lbs.)		
A	B	C	Watts	W/In <sup>2</sup>	Model	120V		240V		Watts	W/In <sup>2</sup>	Model	120V			240V	
						Stock	PCN	Stock	PCN				Stock	PCN		Stock	PCN
<b>Half Sheath</b>																	
2-1/4	1/4	11/32	150	15	HSP-2	NS	185930										0.2
2-3/4	1/4	11/32	250	18	HSP-2.75	S	185949										0.25
3-1/4	5/16	11/32	200	11	HSP-3	S	185957										0.3
3-1/4	5/16	11/32	400	21	HSP-3	S	185965										0.3
3-1/4	5/16	11/32	150	8	HSP-3-3	S	185973										0.3
<b>Full Sheath</b>																	
3-1/4	13/64	5/16	400	24	HSP-31	S	255513										0.4
3-1/4	13/64	5/16	400	24	HSP-31			S	255521								0.4
3-1/4	13/64	5/16	400	24	HSP-31-3	S	255530										0.4
<b>Half Sheath — Lead Wires</b>																	
2-1/4	1/4	1/4	250	9.7						250	9.7	HSP-20	S	274191			0.7
<b>Half Sheath</b>																	
3-1/4	9/32	11/32	600	31						600	31	HSP-30	S	129306			0.8
3-1/4	9/32	11/32	400	21						400	21	HSP-30-3	S	185981			0.3

**Stock Status:** S = stock AS = assembly stock NS = non-stock  
**To Order**—Specify model, PCN, watts, volts and quantity.

1. "-3" in model number indicates 3 heat except HSP-3 which is one heat.