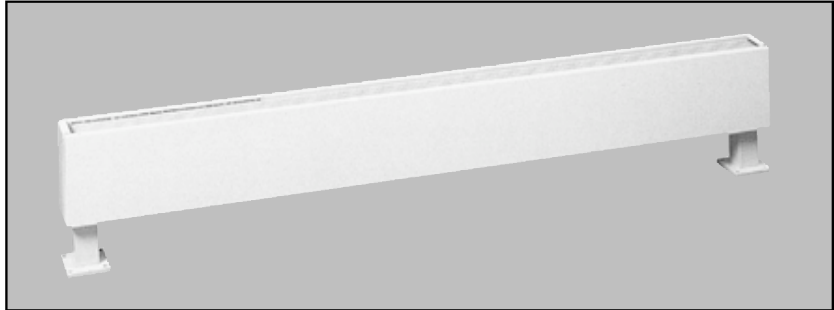


## TYPE DPH and CPH DECORATIVE AND COMMERCIAL PEDESTAL HEATERS

- CPH Series units are ideal for high traffic areas with high heat needs where wall mounted units are not appropriate such as air, rail or bus terminals, corridors, lobbies, foyers, auditoriums, etc. These are not intended for residential applications. They can be mounted singly, in lengths from 28 inches to 10 feet, or joined end-to-end for complete perimeter heating. They are ruggedly built to withstand years of hard usage in public and commercial buildings.

- **VARIABLE HEAT OUTPUT** - Depending on the requirements of the space being heated, the CPH units may contain one to three heating elements that yield a broad range of heating capacity from 125 watts per foot (426 BTU per hour per foot) to 750 watts per foot (2560 BTU per hour per foot).

- **RUGGED CONSTRUCTION** - The front cover is constructed of 16 gauge steel with 14 gauge being optional. Also available is optional 1/4-inch mesh located under the discharge grille to deter the insertion of objects into the unit.



- **MULTIPLE CABINET SIZES** - The CPH is available in two cabinet sizes. This provides heating flexibility as well as styling flexibility.

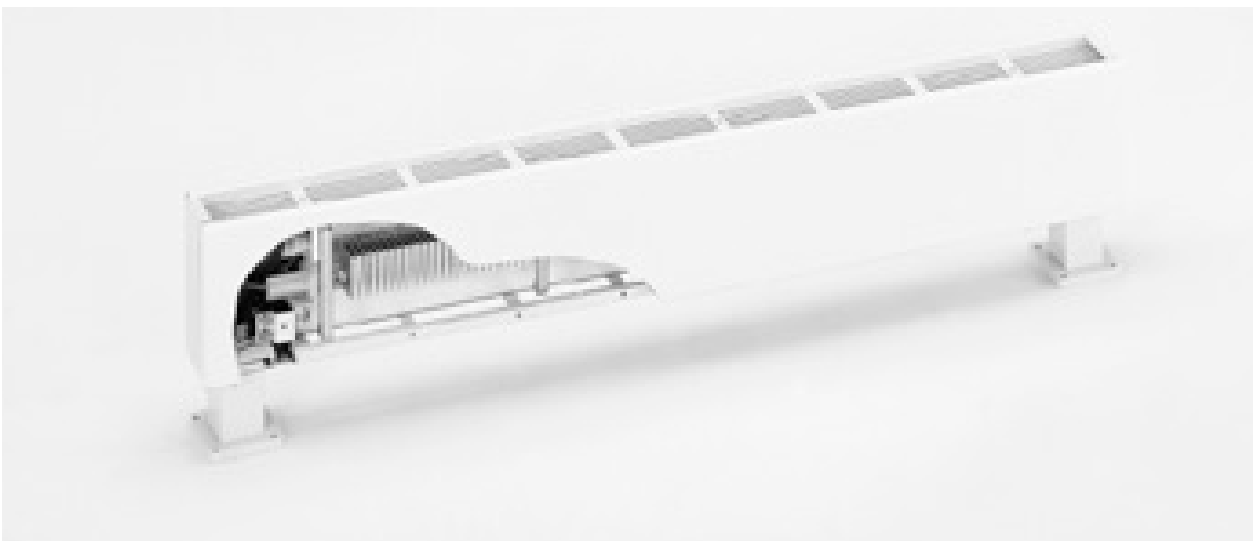
- **PRE-WIRED JUNCTION BOXES** - Each unit has identical pre-wired junction boxes at either end of the unit to permit power supply entry and connection flexibility. Each unit has a wireway with factory installed wiring rated 35 amps for the CPHAS and 45 amps for the CPHAM, eliminating the need to fish additional wires for multiple unit hook-up.

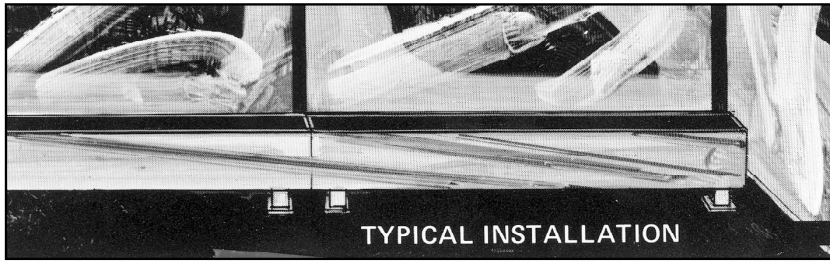
- **OPTIONAL CONTROLS** - Each unit has available a selection of optional built-in controls that include a single

pole or double pole line voltage thermostat, disconnect switch, power relay, or transformer relay.

- **ACCESSORIES** - A full line of accessories is designed for the CSH Series is field adaptable for the CPH Series unit. This includes filler sections and corner sections. End caps are required to close off the junction box on all installations where the end of the unit does not mate with another unit.

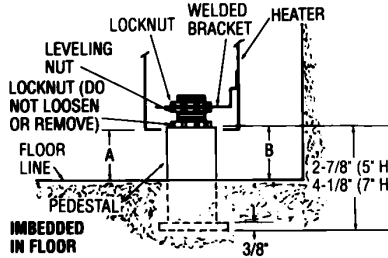
- **FINISHES** - Nine standard painted colors plus grey primer are available. Custom color matching is also available for a nominal color matching charge.



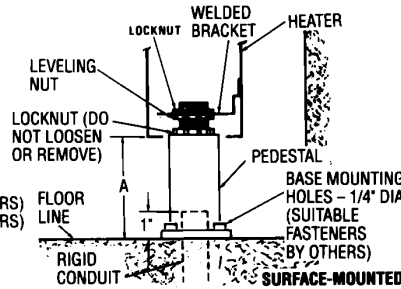


TYPICAL INSTALLATION

Heater Capacity (Watts/Ft. Heater Length)	Heater Dimension "A" (Minimum Mounting Height Above Floor)	Pedestal Dimension "B" (Minimum Height Above Floor)
125, 188 and 250 Watts/Ft.	1-3/4"	2"
376, 500, 564, 625 and 750 Watts/Ft.	3"	3-1/4"



Heater Catalog Number	Height Above Floor (Dim. "A")	
	Min.	Max.
CPH05A, DPH05A	2-5/8"	3-3/8"
CPH07A, DPH07A	3-7/8"	4-5/8"

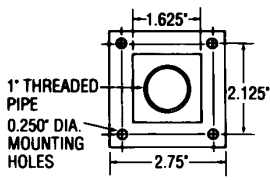


ACCESSORIES

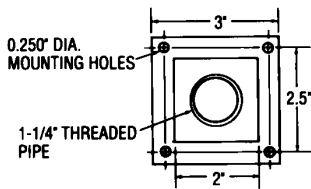
CATALOG NUMBER	USE W/DSH	DIMENSIONS (Inches)			
		H	D	L	N*
<b>LEFT END CAPS</b>					
CSH05-ECL**	CPH05A	5-1/2	2-1/2		
CSH07-ECL**	CPH07A	7	4-3/4	—	1/8
DSH05-ECL**	DPH05A	5-1/2	2-1/2		
DSH07-ECL**	DPH07A	7	4-3/4		
<b>RIGHT END CAPS</b>					
CSH05-ECR**	CPH05A	5-1/2	2-1/2		
CSH07-ECR**	CPH07A	7	4-3/4	—	1/8
DSH05-ECR**	DPH05A	5-1/2	2-1/2		
DSH07-ECR**	DPH07A	7	4-3/4		
<b>PEDESTAL LEGS (FOR CPH05 AND DPH05 HEATERS)</b>					
PHB05-2**	2', 3', & 4' heaters and blank sections				
PHB05-3**	5', 6', & 8' heaters and blank sections				
PHB05-4**	10' heaters and blank sections				
<b>PEDESTAL LEGS (FOR CPH07 AND DPH07 HEATERS)</b>					
PHB07-2**	2', 3', & 4' heaters and blank sections				
PHB07-3**	5', 6', & 8' heaters and blank sections				
PHB07-4**	10' heaters and blank sections				
<b>BLANK SECTIONS (CPH05)</b>					
CPH05-BL2-1				28	28
CPH05-BL3-1				36	36
CPH05-BL4-1				48	48
CPH05-BL5-1	CPH05	5-1/2	3	60	60
CPH05-BL6-1				72	72
CPH05-BL8-1				96	96
CPH05-BL10-1				120	120
<b>BLANK SECTIONS (CPH07)</b>					
CPH07-BL2-1				28	28
CPH07-BL3-1				36	36
CPH07-BL4-1				48	48
CPH07-BL5-1	CPH07	7	5	60	60
CPH07-BL6-1				72	72
CPH07-BL8-1				96	96
CPH07-BL10-1				120	120
<b>BLANK SECTIONS (DPH05)</b>					
DPH05-BL2-1				28	28
DPH05-BL3-1				36	36
DPH05-BL4-1				48	48
DPH05-BL5-1	DPH05	5-1/2	3	60	60
DPH05-BL6-1				72	72
DPH05-BL8-1				96	96
DPH05-BL10-1				120	120
<b>BLANK SECTIONS (DPH07)</b>					
DPH07-BL2-1				28	28
DPH07-BL3-1				36	36
DPH07-BL4-1				48	48
DPH07-BL5-1	DPH07	7	5	60	60
DPH07-BL6-1				72	72
DPH07-BL8-1				96	96
DPH07-BL10-1				120	120

\* N is the additional length the accessory adds to the total installation length.

PEDESTAL DETAILS

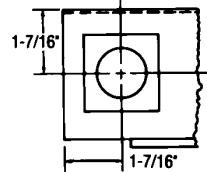


5" HEATER PEDESTAL

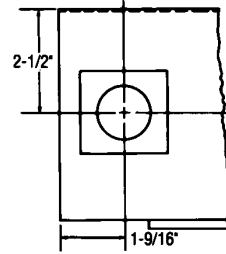


7" HEATER PEDESTAL

PEDESTAL LOCATION

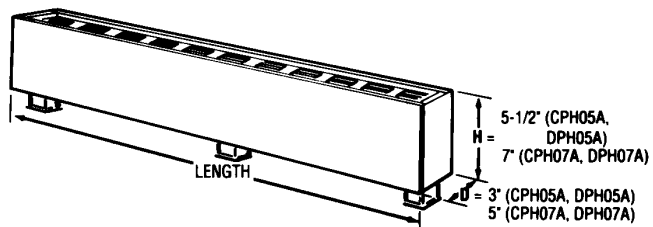


BOTTOM OF 5" HEATERS



BOTTOM OF 7" HEATERS

HEATING AND BLANK SECTIONS



### DPH-05A AND CPH05A SELECTION CHART

LENGTH	AMPERAGE						NOMINAL WATTS/FT.	TOTAL HEATING CAPACITY		NO. OF ELEMENTS	CATALOG NUMBER*
	120V	208V	240V	277V	347V	600V		WATTS	BTU/HR		
28" (711mm)	2.4	1.2	1.0	0.9	—	—	125	250	853	One	*-2125
	3.1	1.8	1.6	1.4	—	—	188	375	1,280		*-2188
	4.2	2.4	2.1	1.8	1.4	—	250	500	1,706		*-2250
3' (914mm)	3.1	1.8	1.6	1.4	1.1	—	125	375	1,280	One	*-3125
	4.7	2.7	2.4	2.0	1.6	—	188	564	1,925		*-3188
	6.2	3.6	3.1	2.7	2.2	—	250	750	2,500		*-3250
4' (1219mm)	4.2	2.4	2.1	1.8	1.4	—	125	500	1,706	One	*-4125
	6.2	3.6	3.1	2.7	2.2	1.3	188	750	2,500		*-4188
	8.3	4.8	4.2	3.6	2.9	1.7	250	1,000	3,413		*-4250
5' (1524mm)	5.2	3.0	2.6	2.2	1.8	1.0	125	625	2,133	One	*-5125
	7.8	4.5	3.9	3.4	2.7	1.6	188	940	3,208		*-5188
	10.4	6.0	5.2	4.5	3.6	2.1	250	1,250	4,266		*-5250
6' (1829mm)	6.2	3.6	3.1	2.7	2.2	1.3	125	750	2,500	One	*-6125
	9.4	5.4	4.7	4.1	3.2	1.9	188	1,125	3,840		*-6188
	12.5	7.2	6.2	5.4	4.3	2.5	250	1,500	5,120		*-6250
8' (2438mm)	—	4.8	4.2	3.6	2.9	1.7	125	1,000	3,413	One	*-8125
	—	7.2	6.2	5.4	4.3	2.5	188	1,500	5,120		*-8188
	—	9.6	8.3	7.2	5.8	3.3	250	2,000	6,826		*-8250
10' (3048mm)	—	6.0	5.2	4.5	3.6	2.1	125	1,250	4,266	One	*-10125
	—	9.0	7.8	6.7	5.4	3.1	188	1,875	6,400		*-10188
	—	12.0	10.4	9.0	7.2	4.2	250	2,500	8,532		*-10250

### Optional Built-in Control Specifications

Optional built-in Control (CATALOG No. Suffix)	Rating
1-Pole Thermostat (-T)	Thermostat adjustable through grill; tamper resistant; range 60-120°F; rated 24 amps @ 120-240 VAC and 22 amps @ 277 VAC; Pilot Duty rating of 125 VA @ 24-277 VAC.
2-Pole Thermostat (-2T)	Thermostat adjustable through grill; tamper resistant; range 60-120°F; rated 24 amps @ 120-240 VAC and 22 amps @ 277 VAC; Pilot Duty rating of 125 VA @ 24-277 VAC.
2-Stage Thermostat (-2ST)	Thermostat adjustable through grill; tamper resistant; range 60-120°F; rating (per stage) 24 amps @ 120-240 VAC and 22 amps @ 277 VAC; Pilot Duty (per stage) 125 VA @ 24-277 VAC; 3°F differential between stages.
Disconnect Switch* (-DS)	Disconnect switch energized through grill; Tamper resistant; double pole single throw switch rated 20 amps (per pole) @ 120-277 VAC.
Transformer Relay (-TR)	Single pole relay with 24 volts holding coil and built-in transformer, relay contacts rated 24 amp @ 120-240 VAC and 22 amps @ 277 VAC for 07 and 14 units; 22 amps @ 120-240 VAC and 19 amps @ 277 VAC for 05 units. 24 volt control.
Power Relay (-PR)	Single pole magnetic relay rated 25 amps @ 120-277 VAC; available with 24, 120, 208/240, or 277 VAC holding coil.
1-Pole Thermostat and Disconnect Switch (-TDS)	Line voltage control, both thermostat and disconnect in power circuit; thermostat adjustable through grill (range 60-120°F); disconnect switch energized through grill; control combination rated 20 amps @ 120-277 VAC.
Disconnect Switch and Transformer Relay (-DSTR)	Line voltage control (requires a remote 24V Pilot Duty thermostat); both disconnect switch and transformer relay in power circuit; disconnect switch energized through grill; control combination rate 20 amps @ 120-240 VAC and 19 amps @ 277 VAC.
Disconnect Switch and Power Relay (-DSPR)	Line voltage control; both disconnect switch and power relay in power circuit; requires a remote control voltage and thermostat for power relay (holding coil voltages available: 24, 120, 208/240, 277 VAC); disconnect switch energized through grill. Control combination rated 18 amps @ 120-277 VAC.
Pilot Duty Thermostat (-PDT)	Thermostat adjustable through grill; tamper resistant; range 60-120°F; thermostat (rated 125 VA @ 24-277 VAC) is wired for Pilot Duty operation of Power Relay (PR) or Transformer Relay (TR). See circuit ampere restrictions with -PR or -TR.
120V Duplex Receptacle (-R)	20 amp duplex receptacle built into left or right end cap or 6, 9, 12 or 18-inch filler section.

### DPH-07A AND CPH07A SELECTION CHART

LENGTH	AMPERAGE						NOMINAL WATTS/FT.	TOTAL HEAT CAPACITY		NO. OF ELEMENTS	CATALOG NUMBER*			
	208V	240V	277V	347V	600V	WATTS		BTU/HR						
28" (711mm)	1.2	—	1.0	—	0.9	—	—	125	250	853	One	*-2125		
	1.8	—	1.6	—	1.4	—	—	188	375	1,280		*-2188		
	2.4	—	2.1	—	1.8	1.4	—	250	500	1,706		*-2250		
	28" (711mm)	3.6	—	3.1	—	2.7	—	—	375	750	2,500	Two	*-2375	
		4.8	—	4.2	—	3.6	2.9	—	500	1,000	3,413		*-2500	
		5.4	3.1	4.7	2.7	4.1	—	—	564	1,125	3,839		*-2564	
3' (914mm)	6.0	3.5	5.2	3.0	4.5	—	—	625	1,250	4,266	Three	*-2625		
	7.2	4.2	6.3	3.6	5.4	4.3	—	750	1,500	5,119		*-2750		
	1.8	—	1.6	—	1.4	1.1	—	125	375	1,280		One	*-3125	
	2.7	—	2.4	—	2.0	1.6	—	188	564	1,925	*-3188			
	3.6	—	3.1	—	2.7	2.2	—	250	750	2,500	*-3250			
	3' (914mm)	5.4	—	4.7	—	4.1	3.2	—	375	1,125	3,839	Two	*-3375	
7.2		—	6.3	—	5.4	4.3	—	500	1,500	5,119	*-3500			
8.1		4.7	7.0	4.1	6.1	4.9	—	564	1,690	5,768	Three		*-3564	
9.0		5.2	7.8	4.5	6.8	5.4	—	625	1,875	6,399		*-3625		
10.8		6.3	9.4	5.4	8.1	6.5	—	750	2,250	7,679		*-3750		
4' (1219mm)		2.4	—	2.1	—	1.8	1.4	—	125	500	1,706	One	*-4125	
	3.6	—	3.1	—	2.7	2.2	1.3	188	750	2,500	*-4188			
	4.8	—	4.2	—	3.6	2.9	1.7	250	1,000	3,413	*-4250			
	4' (1219mm)	7.2	—	6.3	—	5.4	4.3	2.5	375	1,500	5,119	Two	*-4375	
		9.6	—	8.3	—	7.2	5.6	3.3	500	2,000	6,826		*-4500	
		10.8	6.3	9.4	5.4	8.1	6.5	3.8	2.2	564	2,250		7,679	Three
12.0		6.9	10.4	6.0	9.0	7.2	4.2	2.4	625	2,500	8,532	*-4625		
14.4		8.3	12.5	7.2	10.8	8.6	5.0	2.9	750	3,000	10,238	*-4750		
5' (1524mm)		3.0	—	2.6	—	2.3	1.8	1.0	—	125	625	2,133	One	*-5125
	4.5	—	3.9	—	2.4	2.7	1.6	—	188	940	3,208	*-5188		
	6.0	—	5.2	—	4.5	3.6	2.1	—	250	1,250	4,266	*-5250		
	5' (1524mm)	9.0	—	7.8	—	6.8	5.4	3.1	—	375	1,875	6,399	Two	*-5375
		12.0	—	10.4	—	9.0	7.2	4.2	—	500	2,500	8,532		*-5500
		13.6	7.8	11.8	6.8	10.2	8.1	4.7	2.7	564	2,820	9,624		Three
15.2		8.8	13.1	7.6	11.4	9.1	5.3	3.0	625	3,152	10,757	*-5625		
18.0		10.4	15.6	9.0	13.5	10.8	6.3	3.6	750	3,750	12,798	*-5750		
6' (1829mm)		3.6	—	3.1	—	2.7	2.2	1.3	—	125	750	2,500	One	*-6125
	5.4	—	4.7	—	4.1	3.2	1.9	—	188	1,125	3,839	*-6188		
	7.2	—	6.3	—	5.4	4.3	2.5	—	250	1,500	5,119	*-6250		
	6' (1829mm)	10.8	—	9.4	—	8.1	6.5	3.8	—	375	2,250	7,679	Two	*-6375
		14.4	—	12.5	—	10.8	8.6	5.0	—	500	3,000	10,238		*-6500
		16.3	9.4	14.1	8.1	12.2	9.7	5.6	3.3	564	3,380	11,535		Three
18.0		10.4	15.6	9.0	13.5	10.8	6.3	3.6	625	3,750	12,798	*-6625		
21.6		12.5	18.8	10.8	16.2	13.0	7.5	4.3	750	4,500	15,358	*-6750		
8' (2438mm)		4.8	—	4.2	—	3.6	2.9	1.7	—	125	1,000	3,413	One	*-8125
	7.2	—	6.3	—	5.4	4.3	2.5	—	188	1,500	5,119	*-8188		
	9.6	—	8.3	—	7.2	5.8	3.3	—	250	2,000	6,826	*-8250		
	8' (2438mm)	14.4	—	12.5	—	10.8	8.6	5.0	—	375	3,000	10,238	Two	*-8375
		19.2	—	16.7	—	14.4	11.5	6.7	—	500	4,000	13,651		*-8500
		21.6	12.5	18.8	10.8	16.2	13.0	7.5	4.3	564	4,500	15,358		Three
24.0		13.9	20.8	12.0	18.1	14.4	8.3	4.8	625	5,000	17,064	*-8625		
28.8		16.7	25.0	14.5	21.7	17.3	10.0	5.8	750	6,000	20,477	*-8750		
10' (3048mm)		6.0	—	5.2	—	4.5	3.6	2.1	—	125	1,250	4,266	One	*-10125
	9.0	—	7.8	—	6.8	5.4	3.1	—	188	1,875	6,399	*-10188		
	12.0	—	10.4	—	9.0	7.2	4.2	—	250	2,500	8,532	*-10250		
	10' (3048mm)	18.0	—	15.6	—	13.5	10.8	6.3	—	375	3,750	12,798	Two	*-10375
		24.0	—	20.8	—	18.1	14.4	8.3	—	500	5,000	17,064		*-10500
		27.1	15.7	23.5	13.6	20.4	16.3	9.4	5.4	564	5,640	19,248		Three
30.0		17.4	26.0	15.1	22.6	18.0	10.4	6.0	625	6,250	21,330	*-10625		
36.1		20.8	31.3	18.1	27.1	21.6	12.5	7.2	750	7,500	25,596	*-10750		

### NOTES:

These control options are available on models as built in components. In cases where the ampereage of the heater(s) exceeds the rated limit of the control, multiple controls must be specified.

### Example:

DPH07-8750  
240 Volt Single Phase  
Pilot Duty Thermostat & Power Relay  
Required  
Rated 25 Amps  
Order: DPH07-8750-PDT-2PR (240V holding coil)  
240 Volt, 1 PH supply

For 3-phase operation, multiple controls must be specified.

### Example:

DPH07-8750  
240 Volt 3 Phase  
Pilot Duty Thermostat & Power Relay  
Control  
Order: DPH07-8750-PDT-2PR (240V holding coil)  
240 Volt 3 PH supply  
\* 2 required for 30 units 10 units over 20A.

### HOW TO ORDER

When ordering, specify the following:

- BASE HEATER - Specify catalog number (which denotes heater height, length and watts/ft.) and the following:
  - Heater voltage and phase
  - Optional controls (also indicate coil voltage when specifying power relay). Add suffix letters shown above to basic Catalog Number.
  - Optional protective outlet mesh. Add suffix "-M" to Catalog Number.
  - Finish.
- PEDESTAL LEGS - Specify catalog number (which denotes pedestal leg size and quantity in carton) and spec-ify finish.
- END CAPS - Specify catalog number (which denotes size and either left or right hand fit) and specify finish.

## APPLICATION LIMITATIONS AND PRECAUTIONS

A. Hazardous Atmosphere - Because the possibility of a concealed spark can exist from the built-in thermal limit switch, heaters should not be used in potentially explosive atmospheres.

B. Corrosive Atmosphere - The high quality finish and steel internal sheet metal parts will give excellent service under most operating conditions, including coastal salt air and industrial atmospheres. However, the finish is not intended for direct salt spray exposure in marine application or highly corrosive greenhouse, swimming pool, chemical storage or industrial atmospheres.

C. Air Throw - Since heaters provide only natural convection air throw, they are not recommended for combatting cold outside air blasts through high traffic, main entry ways and vestibules.

Heaters will maintain satisfactory comfort conditions in low traffic, side entry ways and vestibules, but for most entry ways, faster response fan driven heaters would be preferred.

D. Curtain, drapes, or blinds - should clear the top of the heater by at least six inches. Never permit draperies to completely cover the unit. Furniture - should be placed so it does not touch the heater and so it does not completely block

the air vents. Allow at least four inches free space between furniture and the heaters.

E. Recess mounting - UL labeled for free standing surface mounting only. Not recommended for mounting behind built-in book shelves, storage cabinets, window seats, etc.

F. In institutional applications such as hospitals, nursing homes, child day-care centers, and clinics, it is recommended that low-watt density and larger case size convectors be used to provide optimum comfort at lowest case temperatures.



## SUGGESTED ENGINEERING SPECIFICATIONS (Type CPH and DPH)

Heaters shall be low profile (3" x 5-1/2" x 7") and available in lengths from 28 inches through 10 feet. Enclosures shall be 16 gauge, furniture quality steel with reinforced, all welded, construction; designed to withstand heavy-duty commercial and institutional use.

Pedestal legs shall be architecturally styled and shall be individually adjustable to insure an even, level heater installation.

Enclosures shall be chemically-treated to resist corrosion and then finished in baked enamel. Finish shall be mar and temperature-resistant to retain contemporary appearance throughout years of rough use.

One, two, or three low density elements shall be installed side-by-side on the same plane to uniformly warm all incoming air. The heating bank shall consist of steel sheath heating elements with aluminum fins for strength and corrosion resistance. Elements shall be center-anchored and shall float freely on each end through nylon bushings for quietness.

On Type CPH, discharge louvers shall be closely spaced steel to direct heat away from wall and to minimize wall and to minimize wall surface temperatures and control dirt streaking.

On Type DPH, discharge louvers shall be extruded aluminum bar grille painted bronze brown to contrast with the neutral grey front finish. The bar grille with contrasting finish shall ensure a clean, decorative finish.

A 1/4-inch mesh screen shall be installed beneath the discharge grille to defer the insertion of foreign objects.

Optional built-in controls shall include single-pole, double-pole, or two-stage thermostats, disconnect switch, transformer relay and power relay. The thermostat shall be capable of controlling multiple units on a pilot duty circuit. (Observe the control limitations indicated.) Thermostat adjustment shall be with a thin-bladed screwdriver through the discharge louvers and shall be considered tamper-resistant.

An automatic reset thermal limit switch shall run the full-length of the heater and shall turn off heating elements should overheating occur at any point along heating length. The limit switch shall restore operation automatically when cause of overheating is removed.

Heaters and blank sections shall be designed so they can be butted together without use of end caps.

Heaters shall be designed with a built-in pre-wired raceway to enable multiple unit wiring from one feeder source.

Back panel shall be one-piece painted steel, completely finished, and shall be suitable for mounting in front of a glass curtain wall.

All heaters and electrical accessories shall be labeled by Underwriters' Laboratories, Inc.

Accessories shall include end caps and blank sections. Blank sections shall be completely enclosed to enable the installer to pull standard wiring from heater to heater through the accessories.



470 Beauty Spot Road East  
Bennettsville, SC 29512