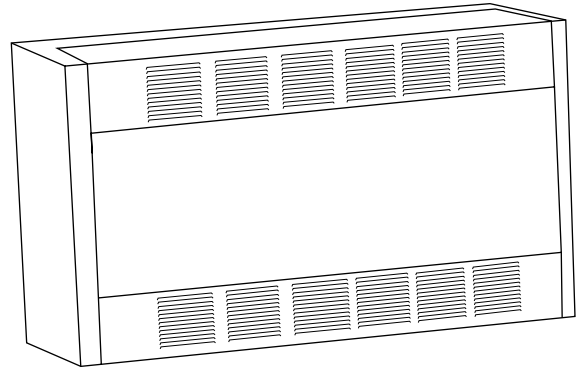




Marley

Engineered Products



900 Series Cabinet Unit Heaters Model B

Installation & Maintenance Instructions

Dear Owner,

Congratulations! Thank you for purchasing this new heater manufactured by a division of Marley Engineered Products. You have made a wise investment selecting the highest quality product in the heating industry. Please carefully read and follow the installation and maintenance directions shown in this manual. You should enjoy years of efficient heating comfort with this product from Marley Engineered Products... the industry's leader in design, manufacturing, quality and service.

*... The Employees of
Marley Engineered Products*



WARNING



Read carefully - These instructions are written to help you prevent difficulties that might arise during installation of heaters. Studying the instructions first may save you considerable time and money later. Observe the following procedures and cut your installation time to a minimum.

TO REDUCE RISK OF FIRE AND ELECTRIC SHOCK:

1. Disconnect all power coming to the heater at main service panel before wiring or servicing.
Note: More than one disconnect may be required.
2. All wiring must be in accordance with national and local electric codes and the heater must be grounded.
3. Verify the power supply voltage coming to heater matches the ratings printed on the heater nameplate before energizing.
4. This heater is hot when in use. To avoid burns, do not let bare skin touch hot surfaces.
5. Do not insert or allow foreign objects to enter any ventilation or exhaust opening as this may cause

6. electric shock, fire, or damage to heater.
6. Do not block air intakes or exhaust in any manner. Keep combustible materials at least 24" (610 mm) away from heater. Keep drapes at least 6" (153 mm) above top of front discharge grille. Do not use drapes above top discharge units. Do not install behind doors, furniture, towel rack, or boxes.
7. A heater has hot and arcing (sparking) parts inside. Do not use in areas where gasoline, paint, or flammable liquids are used or stored.
8. Use this heater only as described in this manual. Any other use not recommended by the manufacturer may cause fire, electric shock, or injury.
9. This heater is not approved for use in corrosive atmospheres such as marine, green house, or chemical storage areas.
10. **FOR DUCT CONNECTED HEATERS**, Do not exceed 0.2" wg. external static pressure and do not mount heater on end panels.
11. Do not use **OPTIONAL 0-100% OUTSIDE AIR DAMPER** with bottom air inlet.

SAVE THESE INSTRUCTION SHEETS

Specifications

HEATING CAPACITY KW BTU/hr		Series	Cabinet Length (in)	CFM*	Total Line Amperage (includes motor amps)											
					208 1 ph 60 Hz	208 3 ph 60 Hz	240 1 ph 60 Hz	240 3 ph 60 Hz	277 1 ph 60 Hz	347 1 ph 60 Hz	380 3 ph 60 Hz	480 3 ph 60 Hz	600 3 ph 60 Hz			
2	6,826	935	35	250	10	6	9	6	8	7	4	3	3			
3	10,239				15	9	13	8	12	9	5	4	4			
4	13,652				20	12	17	10	15	12	7	6	5			
5	17,065				25	15	22	13	19	15	8	7	6			
6	20,478				30	17	26	15	22	18	10	8	7			
7	23,891				34	20	30	18	26	21	11	9	7			
8	27,304				39	23	34	20	30	24	13	10	8			
4	13,652	945	45	500	20	12	18	11	16	13	7	6	5			
6	20,478				30	18	26	16	23	18	10	8	7			
8	27,304				40	23	34	20	30	24	13	11	9			
10	34,130				48	29	43	25	37	30	16	13	11			
12	40,956				59†	34	51†	30	44	36	19	16	13			
14	47,785				68†	40	59†	35	52†	41	22	18	15			
16	54,608				78†	46	68†	40	59†	47	25	20	17			
6	20,478	958	58	750	30	18	26	16	23	18	10	8	7			
8	27,304				40	23	34	20	30	24	13	11	9			
10	34,103				48	29	43	25	37	30	16	13	11			
12	40,956				59†	34	51†	30	44	36	19	16	13			
14	47,782				68†	40	59†	35	52†	41	22	18	15			
16	54,608				78†	46	68†	40	59†	47	25	20	17			
6	20,478				968	68	750	31	19	27	16	24	19	11	9	8
9	30,717	45	27	39				24	34	28	16	13	11			
12	40,956	60	35	52†				31	45	36	20	16	13			
15	51,195	74	44	64†				38	56†	45	25	20	16			
18	61,434	88	52†	77†				45	67†	n/a	29	24	19			
21	71,673	n/a	60†	89†				52†	78†	n/a	34	27	22			
24	81,912	n/a	69†	n/a				60†	n/a	n/a	38	31	25			
8	27,304	978	78	1,000	41	24	36	21	31	25	14	12	10			
12	40,956				60†	36	52†	31	46	37	20	17	14			
16	54,608				79†	47	69†	41	60†	48	27	21	18			
20	68,260				n/a	58†	86†	50†	74†	n/a	33	26	21			
24	81,912				n/a	69†	n/a	60†	n/a	n/a	39	31	15			
28	95,564				n/a	80†	n/a	70†	n/a	n/a	45	36	29			
32	109,216				n/a	91†	n/a	79†	n/a	n/a	41	33	33			

† - CIRCUIT BREAKERS or FUSED DISCONNECT required

* - Value shown for HIGH SPEED on two speed units

General Information

900 Series Cabinet Unit Heaters are designed and UL & cUL Listed to be applied as Standard Free Air heaters with both louvered intake and louvered discharge panels for recess or surface installation: a) on the floor, with front inlet and up flow air movement in the up flow, down flow, left or right direction or b) on the ceiling, or Ducted (0.2" wg external static pressure) flange for direct connection of field supplied ductwork to the inlet, discharge, or both inlet and discharge. Ducted heaters can be installed for recess or surface installation: a) on the floor, with front inlet and up flow air movement, b) on the wall, with air movement in the up flow or down flow direction or c) on the ceiling.

See Figure 1 for Mounting Clearances.

Note: Keep all furniture or any other blocking material at least 24" (610mm) away from front of heater.

When draperies are used, hang them so that when in use they are at least 6" (153mm) above the top of front discharge heater.

Do not use draperies with top discharge heaters.

See Figure 2 for Mounting Dimensions

See Figure 3 for Duct Collar Dimensions and Installation Details.

FLOOR MOUNTING

1. Heaters with front inlet and up flow air movement may be mounted directly on any floor surface including carpeting. Where wall to wall carpeting is installed after heater installation the carpeting can be run up to the front and around the heater body. See Figure 1 for mounting clearances.
2. Heaters can be mounted on either end with air movement left or right directly on any floor surface including carpeting. See Figure 1 for mounting clearances.
3. If optional kick plate is not used, proceed to "HEATER INSTALLATION" section.

INSTALLATION OF OPTIONAL 900 SERIES BASE KIT

1. If desired, the heaters may be mounted off the floor with optional kick plate panel.
2. Align panel on bottom of heater (Inlet side only.)
3. There should be a 1" (25mm) space from the panel to the front and sides of the heater.
4. Match drill .140" (3.55 mm) diameter holes in the bottom of the heater and secure with screws provided.
5. Proceed to "HEATER INSTALLATION" section.

WALL OR CEILING RECESS MOUNTING

CAUTION



TO PREVENT HEATER FROM FALLING AND CAUSING PERSONAL INJURY, EACH FASTENER, AS APPLIED, SHOULD HAVE THE HOLDING POWER OF AT LEAST 100 POUNDS (45 kg).

1. Create an opening in the wall 26-5/8" (676mm) high by the width of the heater plus 1/4" (6.4mm). **Example:** If the heater was 68 inches long, the opening should measure 26-5/8" high x 68-1/4" long).
2. The depth of the recess will vary with the desired amount of heater recess.
3. Proceed to "HEATER INSTALLATION" section.

INSTALLATION OF OPTIONAL 900 SERIES RECESS TRIM KIT

1. Determine depth of heater recess.
2. Align recess trim frame so that the trim frame front edge will touch wall when heater is installed.
3. Match drill .140" (3.55mm) diameter holes in all four sides of the heater and secure trim frame with screws provided.
4. Proceed to "HEATER INSTALLATION" section.

HEATER INSTALLATION

1. Rough-in electrical wiring. See Figure 2 for knockout locations.
2. Remove the proper knockout in the heater or punch the proper size hole in the bottom or right side of the heater as shown in Figure 2.
3. Remove the front cover by rotating the lock(s) counter-clockwise (ccw).
4. Remove Top (Discharge) Louver Panel by removing 2 screws (one on each end) that attach the louver panel to the end panels.
5. Refer to Figure 3 for location of mounting holes.
6. Mark and drill holes for heater attachment in wall or ceiling.
7. Install heater in opening and tighten screws (field supplied) to insure tight fit of the heater against the mounting surface.

NOTE: Tightening the heater against an irregular wall will cause distortion of the back panel of the heater. If this is the case, shims should be used behind the back panel to keep it straight.

8. Reinstall the Top (Discharge) Louver Panel by sliding the panel into the heater. Position the panel tabs of the louver panel to rest on the top of the lip of the heater back. Position the louver panel top even with the top of the end panels. Tap the louver panel at the top front (both sides) to seat the panel. Reinstall 2 screws (one on each side) that attach louver panel to the end panels.
9. WIRING - See wiring section.
10. After wiring is complete, insure that the control box cover is closed and fastened and that the filter is installed.
11. Adjust the thermostat to the desired set point.
12. Adjust the heat selector to the heat and fan speed desired.
13. Replace front cover and secure by turning the locks clockwise (cw) until tight. Replace plug buttons provided.
14. Leave the heater running a few hours before making any further change in thermostat setting.



DUCTED APPLICATIONS

1. See Figure 3 for duct flange size and location.
2. Duct collars have been factory located (Bottom inlet, Front inlet, Top discharge, Front discharge) as ordered.

**WARNING**

TO REDUCE RISK OF FIRE AND ELECTRICAL SHOCK: DO NOT EXCEED 0.2" WG EXTERNAL STATIC PRESSURE. DO NOT MOUNT HEATER ON END PANEL (LEFT OR RIGHT AIR FLOW).

3. To change duct collar location:
 - A. Heater duct panels are supplied with a duct collar attached to one surface and a blank-off plate attached to the other surface. The location of the duct collar and the blank-off plate can be reversed.
 - B. Remove screws holding blank-off plate and remove blank-off plate.
 - C. Remove screws holding duct collar and remove duct collar.
 - D. Position duct collar to location desired, align screw holes, insert and tighten screws to secure duct collar to duct panel.
 - E. Position blank-off plate to location desired, align screw holes, insert and tighten screws blank-off plate to duct panel.
4. Position field ductwork to outside of heater duct flange.
5. Mark and drill starting holes in duct and flange.
6. Install and tighten screws (field supplied) to provide a secure seal.

**WARNING**

TO REDUCE RISK OF FIRE AND ELECTRICAL SHOCK: DO NOT USE 0-100% OUTSIDE AIR DAMPER OPTION WITH BOTTOM AIR INLET. USE ONLY FRONT AIR INLET WITH 0-100% OUTSIDE AIR DAMPER OPTION.

OPTIONAL 0-100% OUTSIDE AIR DAMPER

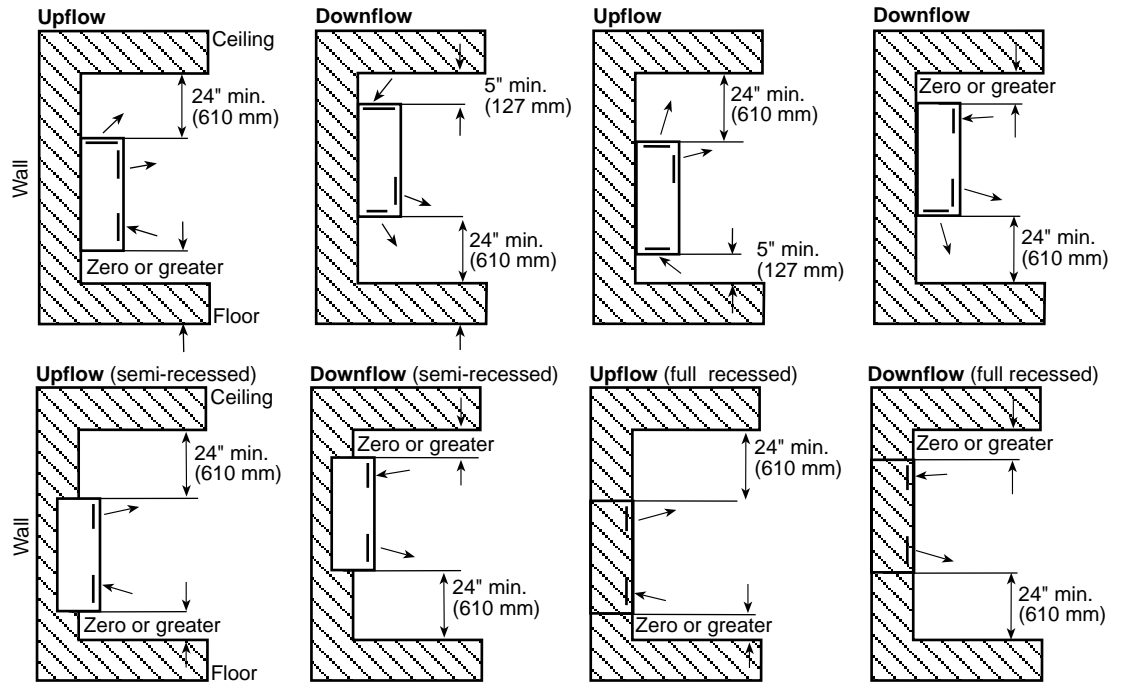
1. Flange brackets for the rear mounted duct collar are packaged unassembled in the heater carton.
2. See Figure 2 for location of damper opening.
3. Position the top flange bracket with the flange at the top of the damper opening and holes in the flange align with holes in the cabinet back.
4. Attach flange to cabinet with screws provided.
5. Position and attach remaining three (3) flange brackets around damper opening.
6. Position field ductwork to outside of flange brackets.
7. Mark and drill starting holes in duct and flange.
8. Install and tighten screws (field supplied) to provide a secure seal.

OPERATION OF OPTIONAL 0-100% OUTSIDE AIR DAMPER

1. Controls, consisting of an "OPEN-CLOSED" switch and 0-100% positioning potentiometer, are located on the control panel door.
2. Place switch in OPEN position.
3. Adjust potentiometer to percentage of outside air desired.
4. The damper will remain open to the position selected until; the "OPEN-CLOSED" switch is moved to the closed position, the "ON-OFF switch (if installed) is turned off, the night set back relay (if installed) is in the night position, or if there is a power failure.

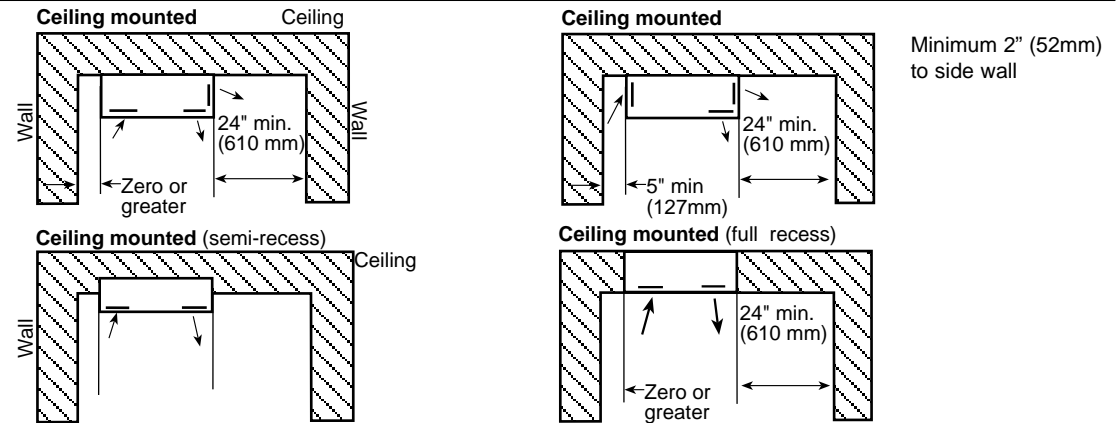
Figure 1

HEATER:
Wall Mounted

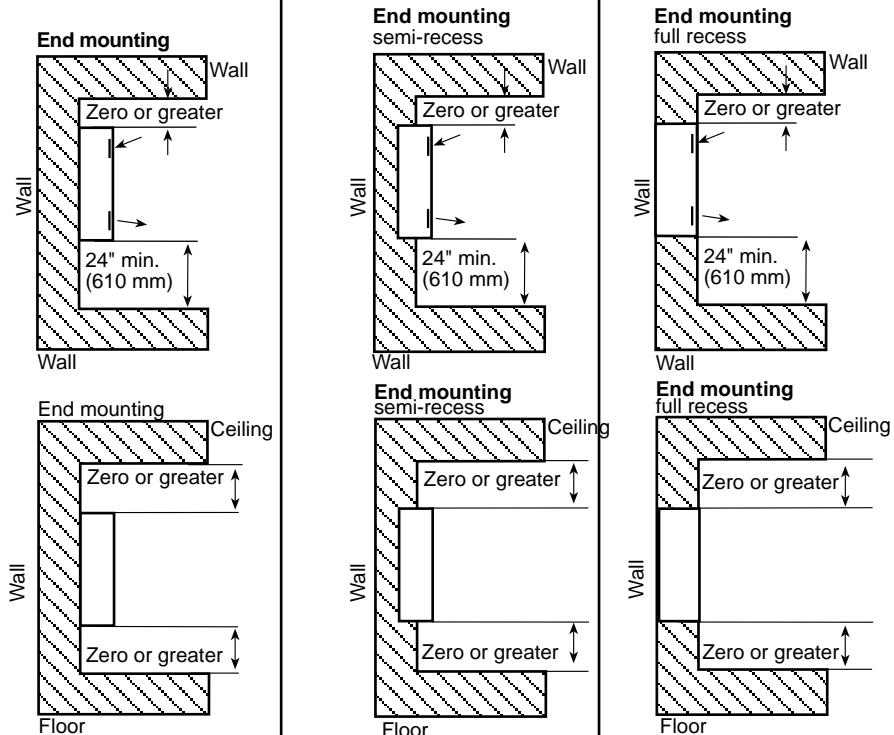


AIR FLOW:
Up or Down

HEATER:
Ceiling Mounted



HEATER:
Wall Mounted on End Panel



AIR FLOW:
Left or Right

Figure 2

MOUNTING DIMENSIONS

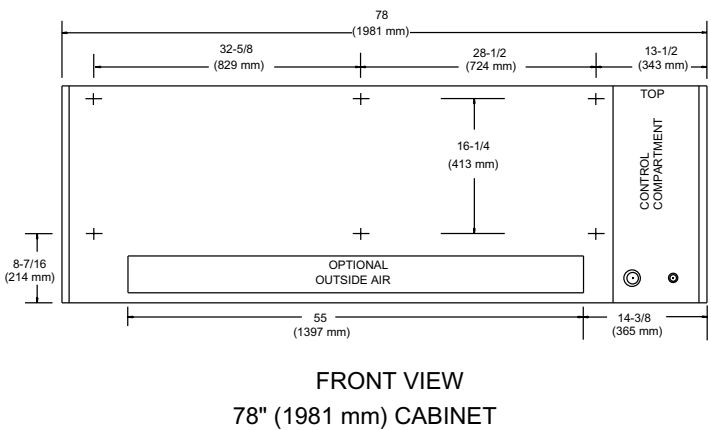
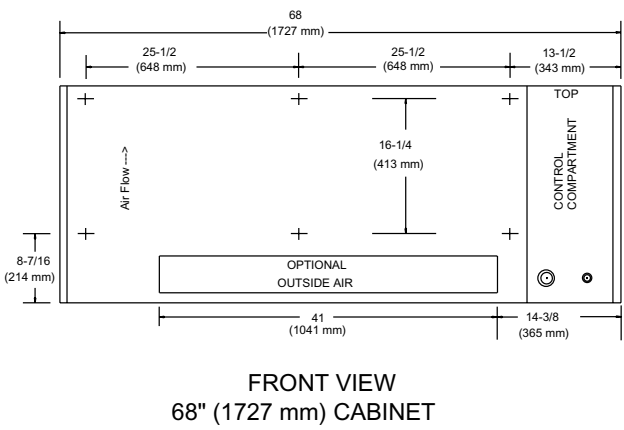
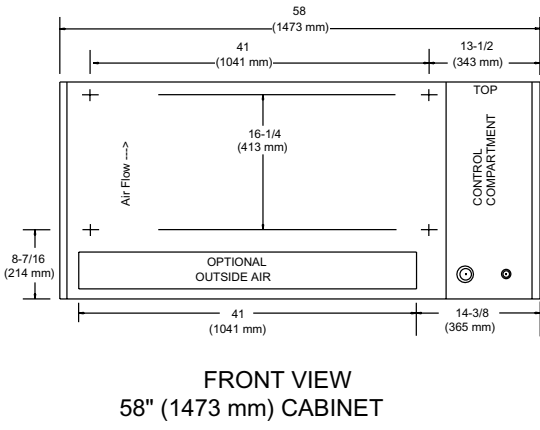
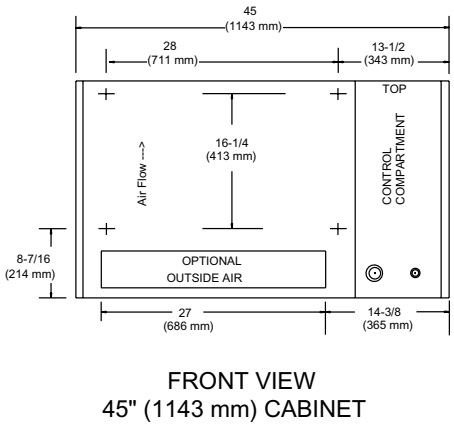
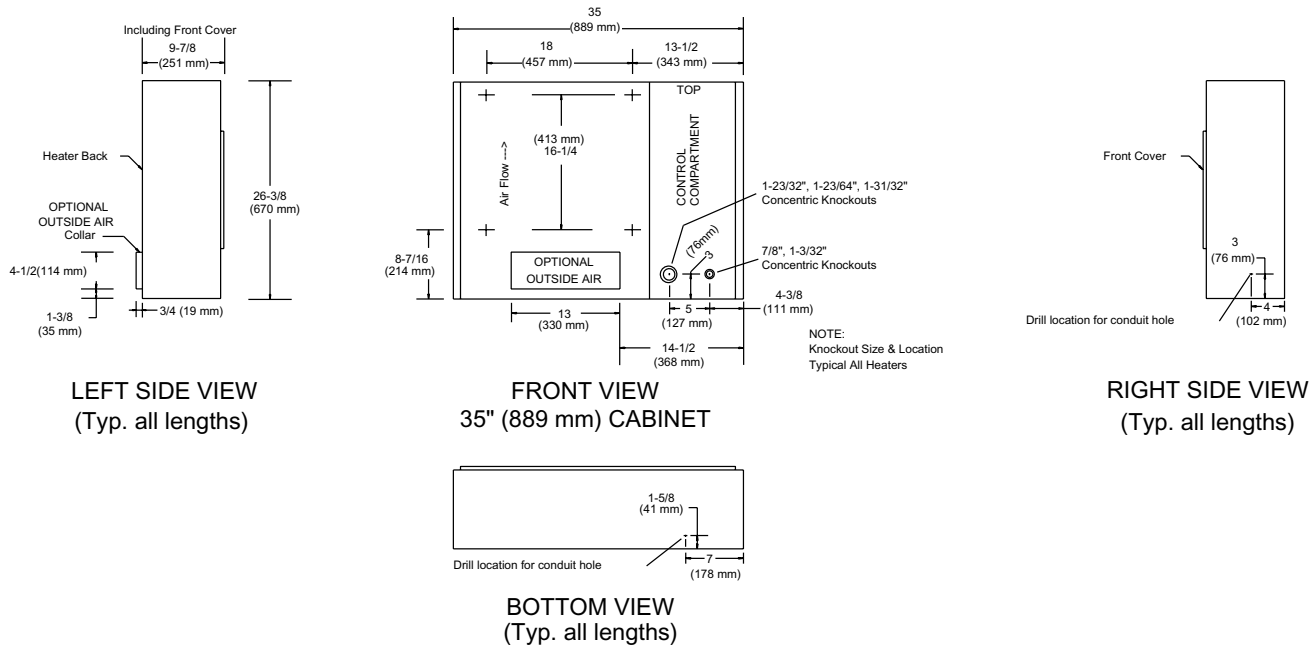
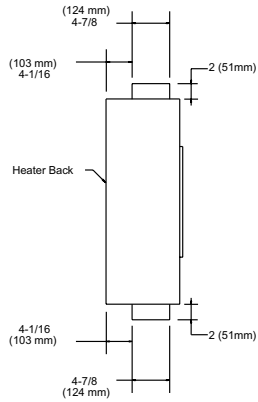
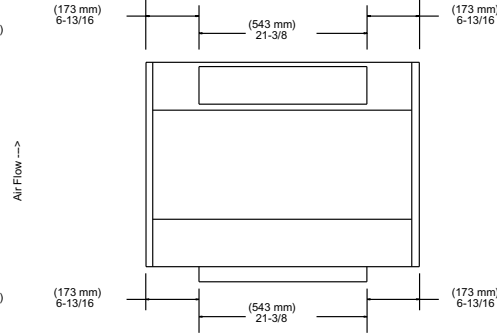


Figure 3

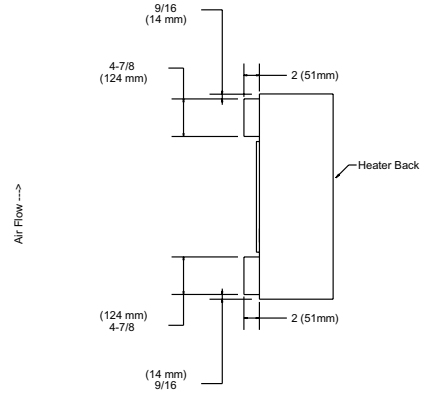
DUCT COLLARS DIMENSIONS and INSTALLATION DETAILS



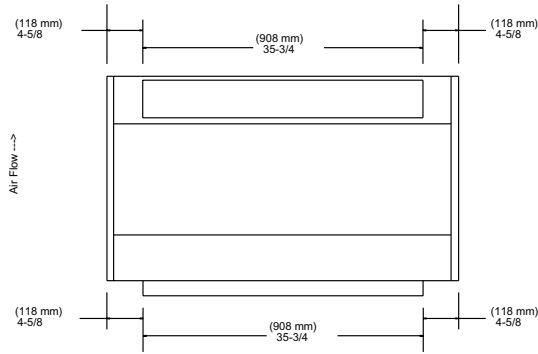
**LEFT SIDE VIEW
BOTTOM INLET /
TOP DISCHARGE
(Typ. all lengths)**



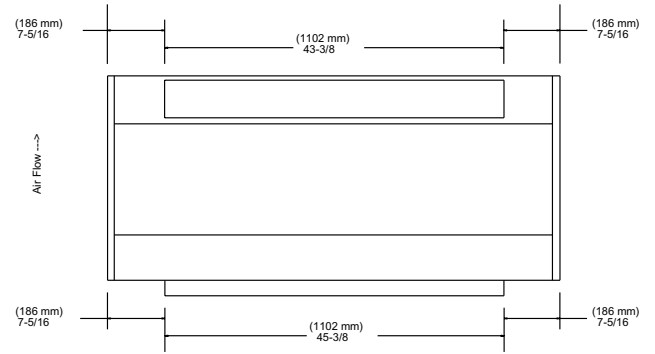
**FRONT VIEW
35" (889 mm) CABINET**



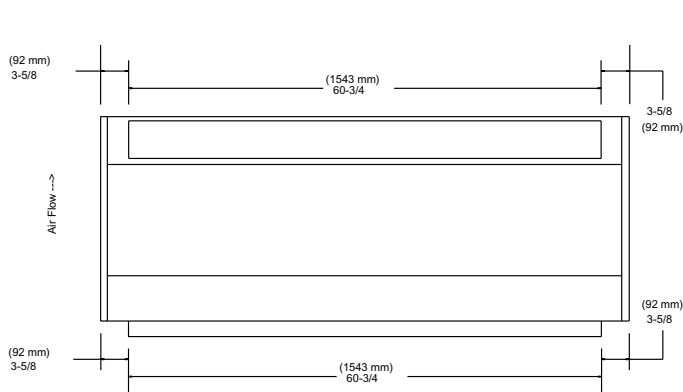
**RIGHT SIDE VIEW
FRONT INLET /
FRONT DISCHARGE
(Typ. all lengths)**



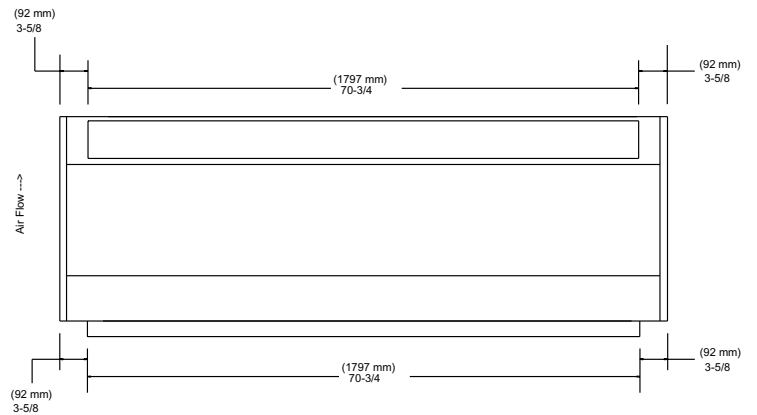
**FRONT VIEW
45" (1143 mm) CABINET**



**FRONT VIEW
58" (1473 mm) CABINET**



**FRONT VIEW
68" (1727 mm) CABINET**



**FRONT VIEW
78" (1981 mm) CABINET**

WIRING

TO CONVERT 208, 240, 480 & 600 VOLT STOCK 5 & 10 KW HEATERS From Three Phase To Single Phase

SEE WARNING STEPS 1, 2 & 3 ON PAGE 1 OF THIS INSTRUCTION SHEET.

1. Figure 4 shows a typical wiring diagram.
2. For actual wiring, see the diagram located on the inside of the front cover.
3. All field wiring must be 75° C min.

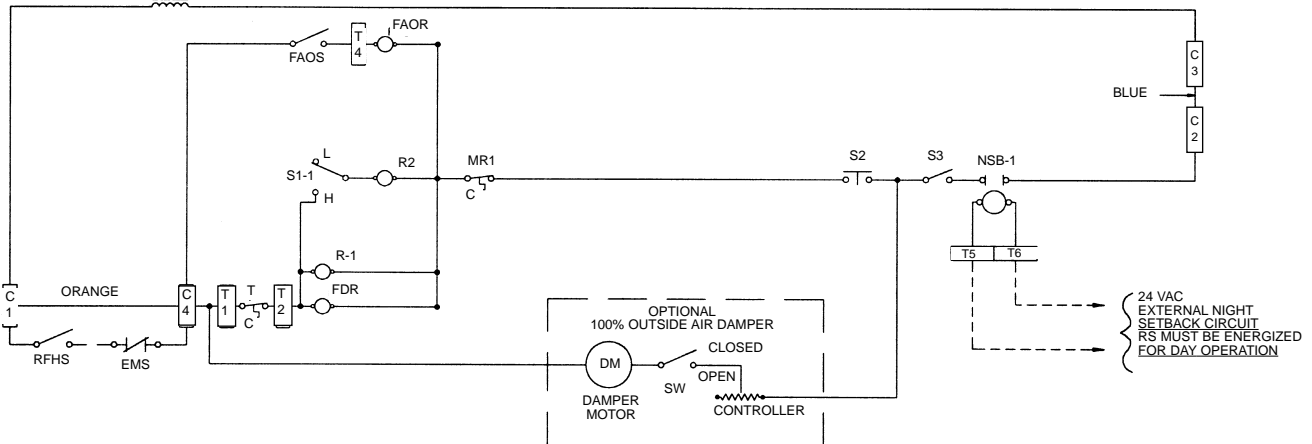
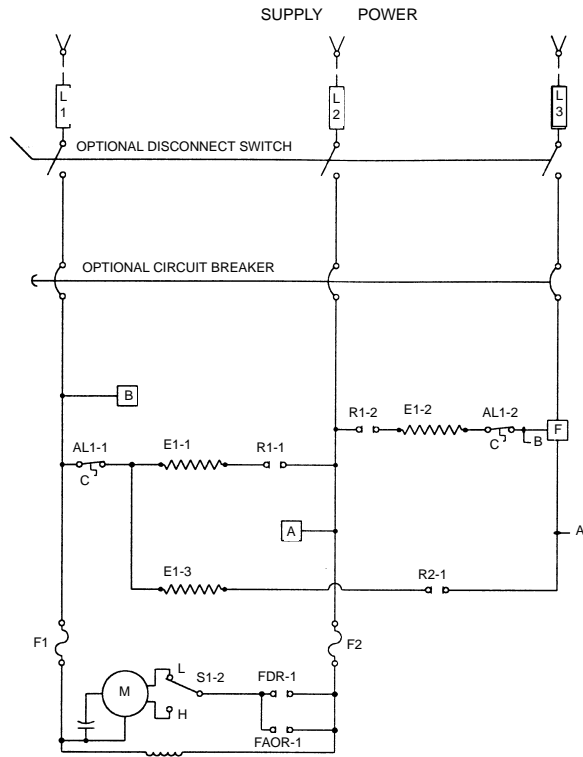
1. Remove front cover.
2. Refer to wiring diagram located inside front cover.

NOTE: Terminal block and wires that need to be changed are located in wire way above right hand (RH) blower housing.

3. Remove two screws holding wireway cover to fan panel.
4. Rotate wireway cover up and out to remove.
5. Terminal block is located within wireway.
6. Relocate wires per wiring diagram located inside front cover.
7. Reinstall wireway cover and reinstall screws.
8. Reinstall front cover.

Typical Wiring Diagram

See wiring diagram on the inside of heater front cover.



EMS=ENERGY MANAGEMENT SYSTEM TIE-IN (CONTACTS MUST BE CLOSED FOR DAY OPERATION)
RFHS=REMOTE MOUNTED FAN/HEAT ON-OFF SWITCH (FIELD SUPPLIED)
NOTE: IF EMS AND/OR RFHS ARE INSTALLED REMOVE ORANGE WIRE BETWEEN C1 AND C4.

FOR EXTERNAL CONTROL SUPPLY:

1. REMOVE BLUE JUMPER BETWEEN C2 AND C3.
2. CONNECT EXTERNAL CONTROL (24 VAC STANDARD, 120 VAC OPTIONAL) TO C1 AND C2.

S1 = FAN/HEAT HIGH-LOW SELECTOR SWITCH
S2 = DOOR INTERLOCK SWITCH
S3 = FAN/HEAT ON-OFF SWITCH (FACTORY INSTALLED OPTION)
NSB = NIGHT SETBACK RELAY (FACTORY INSTALLED OPTION)

AL = AUTO RESET LIMIT
MR = MANUAL RESET LIMIT (FACTORY INSTALLED OPTION)
T = BUILT-IN OR REMOTE MOUNTED SINGLE POLE THERMOSTAT
FAOS = FAN AUTO-ON SWITCH (BUILT-IN = FACTORY INSTALLED OPTION)
(REMOTE MOUNTED = FIELD INSTALLED OPTION)
FDR = FAN DELAY RELAY
FAOR = FAN AUTO-ON RELAY (FACTORY INSTALLED OPTION)

1609-2081-020

CIRCUIT BREAKERS

ORDER PART NO. 410086+VAR NOTED BELOW

CABINET LENGTH	KW	208 1 PH 60HZ		208 3PH 60HZ		240 1PH 60HZ		240 3PH 60HZ		277 1PH 60HZ		347 1PH 60HZ		380 3PH 60HZ		480 3PH 60HZ		600 3PH 60HZ	
		QTY	VAR	QTY	VAR	QTY	VAR	QTY	VAR	QTY	VAR	QTY	VAR	QTY	VAR	QTY	VAR	QTY	VAR
35 in.	2	1	041	1	050	1	041	1	050	1	024	1	017	1	010	1	010	1	059
	3	1	042	1	050	1	042	1	050	1	024	1	017	1	010	1	010	1	059
	4	1	043	1	050	1	043	1	050	1	025	1	018	1	010	1	010	1	059
	5	1	045	1	051	1	044	1	051	1	026	1	018	1	010	1	010	1	059
	6	1	046	1	052	1	045	1	051	1	026	1	019	1	010	1	010	1	059
	7	1	047	1	053	1	046	1	052	1	027	1	020	1	010	1	010	1	059
	8	1	048	1	053	1	047	1	052	1	027	1	020	1	010	1	010	1	059
	48 in.	4	1	044	1	051	1	043	1	050	1	025	1	018	1	010	1	010	1
6		1	046	1	052	1	045	1	051	1	026	1	019	1	010	1	010	1	059
8		1	048	1	053	1	047	1	053	1	027	1	021	1	011	1	010	1	059
10		1	049	1	055	1	048	1	054	1	007	1	022	1	012	1	011	1	059
12		2	046	1	056	2	045	1	055	1	007	1	023	1	012	1	011	1	060
14		2	046	1	057	2	045	1	056	1	021	1	068	1	013	1	012	1	060
16		2	048	1	058	2	047	1	057	1	022	1	068	1	014	1	013	1	061
58 in.	6	1	046	1	052	1	045	1	051	1	026	1	019	1	010	1	010	1	059
	8	1	048	1	053	1	047	1	053	1	027	1	021	1	011	1	010	1	059
	10	1	049	1	055	1	048	1	054	1	027	1	021	1	011	1	010	1	059
	12	2	046	1	056	2	045	1	055	1	007	1	023	1	012	1	011	1	060
	14	2	046	1	057	2	045	1	056	1	021	1	068	1	013	1	012	1	060
	16	2	048	1	058	2	047	1	057	1	022	1	068	1	014	1	013	1	061
68 in.	6	1	046	1	052	1	045	1	052	1	026	1	019	1	010	1	010	1	059
	9	1	049	1	054	1	048	1	053	1	028	1	021	1	011	1	011	1	059
	12	2	046	1	056	2	045	1	055	1	007	1	008	1	013	1	012	1	060
	15	1	048	1	058	1	048	1	057	1	007	1	068	1	014	1	012	1	061
			1	045			1	044			1	026							
	18	3	046	1	056	3	045	1	058	1	028	N/A	N/A	1	014	1	013	1	061
			1	052			1	026			1								
21	N/A	N/A	1	057	3	046	1	056	1	015	N/A	N/A	1	015	1	014	1	062	
			1	053			1	052											
24	N/A	N/A	1	058	N/A	N/A	1	057	N/A	N/A	N/A	N/A	1	009	1	014	1	063	
			1	053			1	053											
78 in.	8	1	049	1	054	1	047	1	054	1	027	1	021	1	011	1	010	1	059
	12	2	046	1	056	2	045	1	055	1	007	1	008	1	013	1	012	1	060
	16	2	048	1	058	2	047	1	058	1	022	1	068	1	014	1	013	1	061
	20	N/A	N/A	2	055	2	049	2	054	1	068	N/A	N/A	1	015	1	014	1	062
	24	N/A	N/A	2	055	N/A	N/A	2	054	N/A	N/A	N/A	N/A	1	009	1	014	1	063
	28	N/A	N/A	2	057	N/A	N/A	2	056	N/A	N/A	N/A	N/A	1	016	1	015	1	064
	32	N/A	N/A	2	058	N/A	N/A	2	057	N/A	N/A	N/A	N/A	N/A	N/A	1	016	1	065

ELEMENTS

ORDER PART NO. 1802-2083+VAR NOTED BELOW

CABINET LENGTH	KW	208 1 PH 60HZ		208 3PH 60HZ		240 1PH 60HZ		240 3PH 60HZ		277 1PH 60HZ		347 1PH 60HZ		380 3PH 60HZ		480 3PH 60HZ		600 3PH 60HZ		
		QTY	VAR	QTY	VAR	QTY	VAR	QTY	VAR	QTY	VAR	QTY	VAR	QTY	VAR	QTY	VAR	QTY	VAR	
35 in.	2	1	100	1	100	1	101	1	101	1	102	1	103	1	100	1	102	1	103	
	3	1	107	1	107	1	114	1	114	1	104	1	105	1	107	1	104	1	105	
	4	1	106	1	106	1	107	1	107	1	108	1	109	1	106	1	108	1	109	
	5	1	110	1	110	1	111	1	111	1	112	1	113	1	110	1	112	1	113	
	6	2	107	2	107	2	108	2	108	2	104	2	105	2	107	2	104	2	105	
	7	1	107	1	107	1	108	1	108	1	104	1	105	1	107	1	104	1	105	
	8	1	106	1	106	1	107	1	107	1	108	1	109	1	106	1	108	1	109	
		1	107	1	107	1	108	1	108	1	112	1	113	1	110	1	112	1	113	
		1	110	1	110	1	111	1	111	1	112	1	113	1	110	1	112	1	113	
48 in.	4	2	100	2	100	2	101	2	101	2	102	2	103	2	100	2	102	2	103	
	6	2	107	2	107	2	108	2	108	2	104	2	105	2	107	2	104	2	105	
	8	2	106	2	106	2	107	2	107	2	108	2	109	2	106	2	108	2	109	
	10	2	110	2	110	2	111	2	111	2	112	2	113	2	110	2	112	2	113	
	12	4	107	4	107	4	108	4	108	4	104	4	105	4	107	4	104	4	105	
	14	2	107	2	107	2	108	2	108	2	104	2	105	2	107	2	104	2	105	
			2	106	2	106	2	107	2	107	2	108	2	109	2	106	2	108	2	109
16	2	107	2	107	2	108	2	108	2	104	2	105	2	107	2	104	2	105		
		2	110	2	110	2	111	2	111	2	112	2	113	2	110	2	112	2	113	
58 in.	6	2	107	2	107	2	108	2	108	2	104	2	105	2	107	2	104	2	105	
	8	2	106	2	106	2	107	2	107	2	108	2	109	2	106	2	108	2	109	
	10	2	110	2	110	2	111	2	111	2	112	2	113	2	110	2	112	2	113	
	12	4	107	4	107	4	108	4	108	4	104	4	105	4	107	4	104	4	105	
	14	2	107	2	107	2	108	2	108	2	104	2	105	2	107	2	104	2	105	
			2	106	2	106	2	107	2	107	2	108	2	109	2	106	2	108	2	109
	16	2	107	2	107	2	108	2	108	2	104	2	105	2	107	2	104	2	105	
		2	110	2	110	2	111	2	111	2	112	2	113	2	110	2	112	2	113	
68 in.	6	3	100	3	100	3	101	3	101	3	102	3	103	3	100	3	102	3	103	
	9	3	107	3	107	3	108	3	108	3	104	3	105	3	107	3	104	3	105	
	12	3	106	3	106	3	107	3	107	3	108	3	109	3	106	3	108	3	109	
	15	3	110	3	110	3	111	3	111	3	112	3	113	3	110	3	112	3	113	
	18	6	107	6	107	6	108	6	108	6	104	N/A	N/A	6	107	6	104	6	105	
	21	N/A	N/A	3	107	3	108	3	108	3	104	N/A	N/A	3	107	3	104	3	105	
				3	106	3	107	3	108	3	108	N/A	N/A	3	106	3	108	3	109	
24	N/A	N/A	3	107	N/A	N/A	3	108	N/A	N/A	N/A	N/A	3	107	3	104	3	105		
			3	110	3	111	3	111	N/A	N/A	N/A	N/A	3	110	3	112	3	113		
78 in.	8	4	100	4	100	4	101	4	101	4	102	4	103	4	100	4	102	4	103	
	12	4	107	4	107	4	108	4	108	4	104	4	105	4	107	4	104	4	105	
	16	4	106	4	106	4	107	4	107	4	108	4	109	4	106	4	108	4	109	
	20	N/A	N/A	4	110	4	111	4	111	4	112	N/A	N/A	4	110	4	112	4	113	
	24	N/A	N/A	8	107	N/A	N/A	8	108	N/A	N/A	N/A	N/A	8	107	8	104	8	105	
	28	N/A	N/A	4	107	N/A	N/A	4	108	N/A	N/A	N/A	N/A	4	107	4	104	4	105	
				4	106	4	107	4	107	4	108	N/A	N/A	4	106	4	108	4	109	
	32	N/A	N/A	4	107	N/A	N/A	4	108	N/A	N/A	N/A	N/A	N/A	N/A	4	104	4	105	
			4	110	4	111	4	111	N/A	N/A	N/A	N/A	4	110	4	112	2	113		

REPLACEMENT PARTS LIST (cont.)
Basic Model Series

Description	935		945		958		968		978	
	QTY	P/N	QTY	P/N	QTY	P/N	QTY	P/N	QTY	P/N
Filter (Permanent)	1	2010-7008-006	1	2010-7008-007	1	2010-7008-008	1	2010-7008-006	2	2010-7008-007
							1	2010-7008-007		
Filter (Throw-Away)	1	2010-7009-006	1	2010-7009-007	1	2010-7009-008	1	2010-7009-006	2	2010-7009-007
							1	2010-7009-007		
Motor	1	3900-2032-000	1	3900-2033-000	1	3900-2033-000	1	3900-2033-000	2	3900-2033-000
							1	3900-2032-000		
Manual Reset Limit	1	4520-2017-000	1	4520-2017-000	1	4520-2017-000	1	4520-2017-001	1	4520-17-002
Auto Reset Limit						4520-2048-000				
Power Relay (24V Control) (120V Control)						410101001 410101003				
Fan Delay Relay										
Single Stage Heater (24V Control) (120V Control)						410171001 410171002				
Two Stage Heater (24V Control) (120V Control)						410101001 410101003				
Transformer (Power) 277V Heater 347V Heater 380V Heater 480V Heater 600V Heater				490015025 490015026 490015011 490015025 490015026				490015024 490015027 490015023 490015024 490015027		
Transformer (Control) (24V Control) (120V Control)						490026007 49002604				
Thermostat (Built-in) Single Stage Heater Two Stage Heater						410127001 5813-2008-000				
High-Low Heat Switch						5216-2029-000				
Heat On-Off Switch						5216-2029-001				

LIMITED WARRANTY

All products manufactured by Marley Engineered Products are warranted against defects in workmanship and materials for one year from date of installation, except heating elements which are warranted against defects in workmanship and materials for five years from date of installation. This warranty does not apply to damage from accident, misuse, or alteration; nor where the connected voltage is more than 5% above the nameplate voltage; nor to equipment improperly installed or wired or maintained in violation of the product's installation instructions. All claims for warranty work must be accompanied by proof of the date of installation.

The customer shall be responsible for all costs incurred in the removal or reinstallation of products, including labor costs, and shipping costs incurred to return products to Marley Engineered Products Service Center. Within the limitations of this warranty, inoperative units should be returned to the nearest Marley authorized service center or the Marley Engineered Products Center, and we will repair or replace, at our option, at no charge to you with return freight paid by Marley. It is agreed that such repair or replacement is the exclusive remedy available from Marley Engineered Products.

THE ABOVE WARRANTIES ARE IN LIEU OF ALL OTHER WARRANTIES EXPRESSED OR IMPLIED, AND ALL IMPLIED WARRANTIES OF MERCHANTABILITY AND FITNESS FOR A PARTICULAR PURPOSE WHICH EXCEED THE AFORESAID EXPRESSED WARRANTIES ARE HEREBY DISCLAIMED AND EXCLUDED FROM THIS AGREEMENT. MARLEY ENGINEERED PRODUCTS SHALL NOT BE LIABLE FOR CONSEQUENTIAL DAMAGES ARISING WITH RESPECT TO THE PRODUCT, WHETHER BASED UPON NEGLIGENCE, TORT, STRICT LIABILITY, OR CONTRACT.

Some states do not allow the exclusion or limitation of incidental or consequential damages, so the above exclusion or limitation may not apply to you. This warranty gives you specific legal rights, and you may also have other rights which vary from state to state.

For the address of your nearest authorized service center, contact Marley Engineered Products in Bennettsville, SC, at 1-800-642-4328. Merchandise returned to the factory must be accompanied by a return authorization and service identification tag, both available from Marley Engineered Products. When requesting return authorization, include all catalog numbers shown on the products.

HOW TO ORDER REPAIR PARTS

In order to obtain any needed repair or replacement parts, warranty service or technical information, please contact Marley Engineered Products Service Center toll-free by calling 1-800-642-HEAT.

When ordering repair parts, always give the information listed as follows:

1. The Part Number
2. The Model Number
3. The Part Description
4. Date of Manufacture

5200-2386-001

ECR 34345

5/01



Marley
Engineered Products

SPX Corporation
470 Beauty Spot Rd. East
Bennettsville, SC 29512 USA