

# FRC SERIES

## COMMERCIAL / ARCHITECTURAL FAN FORCED WALL HEATERS

- ARCHITECTURAL STYLING
- 16 GAUGE FRONT BAR GRILLE
- BUILT-IN TAMPER-PROOF THERMOSTAT, THERMAL CUTOUT, FAN DELAY AND DISCONNECT SWITCH
- OPTIONAL PNEUMATIC/ELECTRIC SWITCH AND 24 OR 120 VOLT RELAY CONTROL
- HIGH CAPACITY - UP TO 4800 WATTS
- SURFACE OR RECESSED MOUNTING

### APPLICATIONS

Berko's high-capacity, heavy duty fan forced wall heaters are designed for use almost anywhere in commercial or industrial areas requiring high capacity and quick recovery. They perform exceptionally well in such applications as motels, entryways, stores, public rest rooms, warehouses and other large, hard to heat areas.

All controls are concealed behind the front cover making them essentially tamper proof. They will accommodate pneumatic/electric or low-voltage controls commonly used with computerized energy management systems.



FILE # E21609



### SELECTION CHART

CATALOG NO.	VOLTS	PH.	AMPS	WATTS	BTU/HR	WIRE SIZE
FRC1512	120	1	12.5	1500	5120	12 AWG
FRC1812	120	1	15	1800	6142	12 AWG
FRC4020*	208	1	19.2	4000	13650	10 AWG
			9.6	2000	6825	
FRC4024*	240	1	16.7	4000	13650	10 AWG & 12 AWG
			8.3	2000	6825	
	208	1	14.4	3000	10235	
			7.2	1500	5120	
FRC4027*	277	1	14.4	4000	13650	12 AWG
			7.22	2000	6825	
	240	1	12.5	3000	10235	
			6.3	1500	5120	
FRC3027*	277	1	10.8	3000	10235	12 AWG
			5.4	1500	5120	
FRC4820	208	1	23.1	4800	16380	10 AWG
FRC4824	240	1	20	4800	16380	10 AWG
	208	1	17.3	3600	12285	
FRC4827	277	1	17.3	4800	16380	10 AWG
	240	1	15	3600	12285	
FRC40203	208	3	11.1	4000	13650	14 AWG
FRC48203	208	3	13.3	4800	16380	12 AWG
FRC40243	240	3	9.6	4000	13650	14 AWG
FRC48243	240	3	11.6	4800	16380	14 AWG

\*Heaters shipped at higher wattage. Units can be converted to half-wattage in field.

### ACCESSORIES

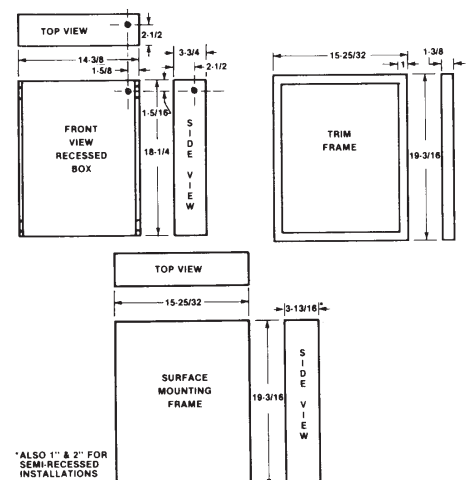
CATALOG NO.	DESCRIPTION
FRPE	Pneumatic/electric switch.
FRR2	24V time-delay relay.
FRR12	120V time-delay relay.
FRS1PB	1" semi-recessed mounting frame.
FRS2PB	2" semi-recessed mounting frame.
FRSMPB	Surface mounting frame.
KSFC	14 gauge security front cover.

### MOUNTING LIMITATIONS

1. For wall mounting - Do not install back box closer than 8 inches from floor or adjacent wall.
2. Do not install heater behind towel rack, behind door, in floor, in closet, in ceiling or where air flow may be obstructed.

Thermostat range	40° to 90° F
Air Movement	100 CFM

### DIMENSIONS



## **ARCHITECT'S AND ENGINEER'S SPECIFICATIONS\***

The heating equipment shall include an electric, automatic fan forced electric air heater suitable for large area heating as manufactured by Berko, A Marley Engineered Products Brand, Bennettsville, SC. The heater shall be designed for wall recess or surface mounting. Heaters shall be UL Listed.

**HEATER ASSEMBLY:** The heater assembly which fits not the back box shall consist of a fan panel upon which is mounted all of the operational parts of the heater.

**HEATING ELEMENT:** The heating element shall be of the non-glowing design consisting of a special resistance wire enclosed in a steel sheath to which steel plate fins are copper brazed. It shall be warranted for 5 years.

**FAN AND MOTOR:** Fan shall be five-bladed aluminum. Fan motor shall be totally enclosed.

**FAN DELAY SWITCH:** Fan control shall be of bi-metallic, snap-action type and shall activate fan after heating element reaches operating temperature. The fan shall continue to operate after the thermostats is satisfied and until the heating element is cool.

**THERMOSTAT:** The tamper-proof thermostat shall be of the bi-metallic snap-action type with enclosed contacts. It shall be completely concealed behind the front cover to become tamper proof.

**DISCONNECT SWITCH:** A double-pole, single throw disconnect switch shall be mounted on the back box for positive disconnect of power supply. It will be completely concealed behind the front grille panel.

**PNEUMATIC/ELECTRIC SWITCH:** An optional pneumatic/electric switch shall be available for use with energy management systems employing pneumatic pressure devices for controlling comfort levels and set-back operation.

**LOW VOLTAGE RELAYS:** 24-volt and 120-volt low voltage relays shall be available as optional equipment to control 208, 240 or 277 volt heaters in conjunction with central energy control systems. The built-in thermostat can then be used as one of the thermostats in an automatic night set back operation.

**BACK BOX:** The back box shall be designed for duty as a recessed rough-in box in either masonry frame installations, and is also used with the surface mounting frame in surface mounted installations. The back box shall be 20-gauge galvanized steel and shall contain knockouts through which power leads are bought.

**FRONT PANEL:** The front panel shall be of the bar grille type and shall be constructed of 16-gauge cold-rolled steel, welded into uniform grille to direct the warmed air toward the floor. The front grille shall be surrounded by a decorative satin-finish aluminum "Picture" frame.

**THREE PIECE DESIGN:** The heater shall be made up of a back box, a heater assembly and front panel.

*\* Berko reserves the right to change specifications without prior notice.*